

PART IV

SITE OPERATING PLAN

MUNICIPAL SOLID WASTE LANDFILL

THE CITY OF ALICE, TEXAS

Permit No. MSW 262-C

TCEQ Customer No. CN600140666

TCEQ Regulated Entity No. RN101478279

Revision 08M

February 2007

Prepared By

NAISMITH ENGINEERING, INC.
ENGINEERING • ENVIRONMENTAL • SURVEYING
CORPUS CHRISTI, TEXAS

NEI PROJECT NO. 6060-04

TABLE OF CONTENTS

1. GENERAL..... 1

2. RECORDKEEPING AND REPORTING 1

2.1. Recordkeeping..... 1

2.2. Reporting Requirements 4

2.3. Updating the SOR..... 5

3. WASTE ACCEPTANCE RATES 5

4. PERSONNEL 5

4.1. Number, Categories and Qualifications of Personnel 5

4.2. Personnel Training Requirements 7

5. ON-SITE EQUIPMENT 10

5.1. Dedicated Equipment 10

5.2. Multi-use Equipment..... 11

5.3. Equipment Requirements Based on Waste Acceptance Rate..... 12

6. DETECTION AND PREVENTION OF DISPOSAL OF PROHIBITED WASTE, HAZARDOUS WASTE, AND PCBS..... 12

6.1. Prohibited Wastes 13

6.2. Special Wastes 13

6.3. Site Entrance Procedures..... 15

6.4. Detection of Prohibited Wastes During or After Placement..... 17

7. FIRE PROECTION PLAN..... 18

7.1. Personnel Requirements..... 19

7.2. Outside Assistance 19

7.3. Fire Prevention Activities..... 19

7.4. Initial Response Actions 22

7.5. Fire Suppression Actions by Type of Fire 22

7.6. Incident Follow-up..... 24

8. ACCESS CONTROL..... 25

8.1. Site Access Control Facilities 25

8.2. Site Access Control Procedures 25

8.3. Notifications Regarding Access Breaches..... 26

9. UNLOADING OF WASTE..... 26

10. FACILITY OPERATING HOURS..... 27

11. SITE SIGN..... 27

12. CONTROL OF WINDBLOWN SOLID WASTE AND LITTER..... 27

12.1. Load Covering Requirement 27

12.2. Control of Windblown Waste and Litter from the Working Face..... 28

13. EASEMENTS AND BUFFER ZONES..... 28

14. LANDFILL MARKERS AND BENCHMARK..... 28

SITE OPERATING PLAN
CITY OF ALICE MUNICIPAL SOLID WASTE LANDFILL
 Permit No MSW 262-C

15.	MATERIALS ALONG ACCESS ROUTES OFF SITE	29
16.	DISPOSAL OF LARGE ITEMS	29
17.	ODOR MANAGEMENT PLAN	30
17.1.	General Requirements.....	30
17.2.	Odor Management.....	30
18.	DISEASE VECTOR CONTROL	32
19.	SITE ACCESS ROADS.....	32
19.1.	Collection of Litter and Other Debris.....	32
19.2.	Tracked Mud and Associated Debris.....	32
19.3.	Dust Control	32
19.4.	Roadway Maintenance	33
20.	SALVAGING AND SCAVENGING.....	33
21.	ENDANGERED SPECIES PROTECTION.....	33
22.	ENVIRONMENTAL MONITORING.....	33
22.1.	Landfill Gas Management.....	33
22.2.	Groundwater Monitoring.....	34
23.	OIL, GAS AND WATER WELLS	34
24.	COMPACTION	34
25.	LANDFILL COVER	35
25.1.	Daily Cover Options	35
25.2.	Intermediate Cover	36
25.3.	Final Cover	36
25.4.	Erosion of Cover	37
25.5.	Cover Application/Inspection Records	37
26.	PONDED WATER.....	37
27.	DISPOSAL OF SPECIAL WASTES	37
28.	SUPPORT OPERATIONS	39
28.1.	New Landfill Units	39
28.2.	Dust Control	39
28.3.	Wet Weather Operations	39
28.4.	Erosion Control.....	40
28.5.	Treatment and Disposal of Leachate	40
28.6.	Control of Contaminated Water	40
28.7.	Waste Processing Activities.....	40
28.8.	Traffic Control	41
28.9.	Collection and Transport Vehicles.....	41
29.	SAFETY RULES	41
29.1.	Equipment Operation.....	42
29.2.	Personal Safety Equipment.....	42
29.3.	Landfill Gas Safety	42
29.4.	Other Safety Rules	42

SITE OPERATING PLAN
CITY OF ALICE MUNICIPAL SOLID WASTE LANDFILL
Permit No MSW 262-C

30. REVISIONS TO SITE DEVELOPMENT PLAN..... 42
31. REFERENCES..... 43

APPENDICES

- APPENDIX A Organizational Chart
- APPENDIX B Procedures to Prevent Disposal of Prohibited Wastes
- APPENDIX C Landfill Operating Forms
- APPENDIX D Waste Acceptance Rate Data
- APPENDIX E Calculations for Soil as Fire Suppression

SITE OPERATING PLAN

CITY OF ALICE MUNICIPAL SOLID WASTE LANDFILL

Permit No. MSW 262-C

1. GENERAL

The purpose of this Site Operating Plan (SOP) is to identify information on how the site operator will conduct the day-to-day operation and management of the City of Alice Municipal Solid Waste Landfill. This SOP represents the design engineer's general instruction for site management and site operating personnel to operate the site in accordance with the site design and the rules of the Texas Commission on Environmental Quality (TCEQ). The procedures outlined in this plan constitute the operating plan proposed for this site and are further supplemented with engineering details in the Site Development Plan (SDP). The SOP will provide guidance to both site management and operations personnel to conduct daily fill activities in a sound environmental manner for the full term of operations at the site. The Site Operating Plan will be used and acknowledged by site personnel, and a copy shall be maintained at all times at the landfill for reference.

2. RECORDKEEPING AND REPORTING

2.1. Recordkeeping

As required by TCEQ regulations, a Site Operating Record (SOR) is maintained at the facility. The SOR serves as the repository for all documents associated with the operation of the landfill. The Landfill Superintendent or a designated alternate is responsible for establishing, maintaining, and updating the SOR. At a minimum, the SOR shall contain copies of the following items:

- Municipal Solid Waste Landfill Permit and all modifications and amendments;
- Approved Site Development Plan (SDP) with all appendices and attachments, including:
 - Site Operating Plan (SOP);
 - Final Closure Plan;
 - Post-Closure Maintenance Plan;
 - Landfill Gas Management Plan (LGMP);
 - Groundwater Sampling and Analysis Plan (GWSAP);
 - Leachate and Contaminated Water Management Plan (LCWMP);
 - Soils and Liner Quality Control Plan (SLQCP);
 - Location Restrictions Certification;
- List of landfill personnel and current training record for each person;
- Daily gate logs;
- Cover application log;
- All leachate and contaminated water testing results, leachate liquid level readings, leachate collection volume records, and other related documents;

SITE OPERATING PLAN
CITY OF ALICE MUNICIPAL SOLID WASTE LANDFILL
 Permit No. MSW 262-C

The information contained in the SOR and the different required plans will be maintained for the life of the facility including the post-closure care period. During the post-closure care period, the SOR will be maintained off-site. All information in the SOR, along with the SOP and any other required documentation will be made available for inspection upon request of the TCEQ. Table 1, below, identifies records to be maintained in the SOR.

Table 1 – Records To Be Maintained in the Site Operating Record

Records To Be Maintained	Rule Citation
Location restriction demonstrations	§330.125(b)(1)
Inspection records, training procedures, and notification procedures relating to excluding the receipt of prohibited waste, including regulated hazardous waste and PCB waste from the landfill	§330.125(b)(2)
All landfill gas facility installation reports, monitoring results, and any resulting remediation plans relating to explosive and other gases, landfill gas management plan required reports and submittals.	§330.125(b)(3) & §330.130
Any unit design documentation in the event that leachate or gas condensate is to be placed into the landfill	§330.125(b)(4)
All groundwater monitoring demonstration, certification, monitoring, testing and analytical data and any resulting corrective action plans	§330.125(b)(5)
Closure and post-closure care plans and any monitoring, testing, analytical data, inspection reports by TCEQ or by a third party relating to post-closure requirements.	§330.125(b)(6)
Any and all cost estimates and financial assurance documentation relating to financial assurance for closure and post-closure.	§330.125(b)(7)
Any and all information demonstrating continued compliance with the small community exemption criteria.	§330.125(b)(8)
Any correspondence to or from the TCEQ regarding site operations, modifications to the permit, approvals, or other matters pertaining to technical assistance.	§330.125(b)(9)
Any and all documents, manifests, trip tickets, etc. involving special wastes.	§330.125(b)(10)
For any spray-applied alternative daily cover (ADC) material, records of the application rate and total amount ADC applied to the working face on those days in which ADC is applied.	§330.125(b)(11)
Any other document(s) as specified by the approved permit or by the executive director.	§330.125(b)(12)
Job title, job description and name of employee filling job position	§330.125(e), §330.586(d)(1)&(2)

SITE OPERATING PLAN
CITY OF ALICE MUNICIPAL SOLID WASTE LANDFILL
 Permit No. MSW 262-C

Written description of the type and amount of training required for each position and documentation that training was given and completed.	§330.125(e), §330.586(d)(3)&(4)
Training records for current and former personnel	§330.125(e), §330.586(e)
Personnel operator licenses	§330.125(f)
Alternative dates and operating hours and notification requirements if applicable.	§330.125(g)
Records to document the annual waste acceptance rate, annual and quarterly Municipal Solid Waste summary reports required by 30 TAC §330.603.	§330.125(h)
Load inspection records.	§330.127(5)(B)
Fire occurrence notices.	§330.129
Inspection records and training procedures relating to fire prevention and site safety.	§330.129
Access control breach and repair notices.	§330.131
All site inspection and maintenance documentation.	§330.131
Record(s) of each unauthorized material removal event.	§330.133(b)
Record of alternative operating hours if applicable.	§330.135(b)
Water, crude oil and/or natural gas well location and plugging reports if applicable.	§330.161(a)-(c)
Cover inspection records.	§330.165(h)
Current site plan of RACM disposal area.	§330.171(c)(3)(B)
RACM acceptance records including the location, depth and volume of each load.	§330.171(b)(3)(B)
RACM contingency plan compliance documentation.	§330.171(b)(3)(H)
Access control inspection and maintenance records	Recommended
Daily litter pickup records	Recommended
Windblown waste and litter control operations records	Recommended
Records regarding the management and disposal of large items	Recommended
Documentation regarding the odor management plan	Recommended
Records regarding dust nuisance control efforts	Recommended
Access roadway re-grading records	Recommended
Records regarding salvaged material storage nuisance control efforts	Recommended
Ponded water prevention documentation	Recommended
Special waste operations documentation	Recommended
Special waste contingency plan documentation	Recommended

SITE OPERATING PLAN
CITY OF ALICE MUNICIPAL SOLID WASTE LANDFILL
Permit No. MSW 262-C

2.2. Reporting Requirements

2.2.1. Pre-Operation Notice

A Soils and Liner Evaluation Report (SLER) and Geomembrane Liner Evaluation Report (GLER) will be provided in triplicate to the TCEQ Municipal Solid Waste Division upon completion of the construction and lining of a new municipal solid waste landfill unit. The contents of the SLER and the GLER are outlined in the Soils and Liner Quality Control Plan (SLQCP) appearing in Attachment 10 of the SDP.

2.2.2. Discovery of Prohibited Waste

If a regulated hazardous waste or PCB waste is discovered during or after placement in the landfill, a report identifying the type of waste and the remediation action taken will be forwarded to the TCEQ on the form provided in Appendix C.

2.2.3. Disposal of Special Waste

If the landfill accepts any special wastes for disposal, a monthly summary of the special wastes received will be forwarded to the TCEQ. The report will be submitted within twenty-five (25) days following the end of the month in which the special waste was received.

2.2.4. Municipal Solid Waste Fee Reports

The City of Alice will provide quarterly and annual summaries of waste received at the landfill as required by 30 TAC §330.603. Forms will be provided by TCEQ to the City prior to the due date.

2.2.5. Groundwater Monitoring Reports

A record of the installation of any new groundwater monitoring wells and all groundwater sampling and analyses results will be forwarded to the TCEQ as outlined in the Groundwater Sampling and Analysis Plan included in Attachment 11 of the SDP.

2.2.6. Landfill Gas Reports

A record of the installation of each gas monitoring or control facility and all gas monitoring results documenting excessive concentrations of methane will be forwarded to the TCEQ, as outlined in the Landfill Gas Management Plan included in Attachment 14 of the SDP.

SITE OPERATING PLAN
CITY OF ALICE MUNICIPAL SOLID WASTE LANDFILL
Permit No. MSW 262-C

2.2.7. Abandoned Oil and Water Wells

Immediate written notification will be provided to the TCEQ upon the discovery of an abandoned water, oil, natural gas, or any other type of well on-site. A written certification that the well has been capped, plugged, and closed in accordance with TCEQ or Railroad Commission of Texas rules will be provided to the TCEQ within thirty (30) days of the discovery.

2.3. Updating the SOR

The City will update the SOR to incorporate archival documentation resulting from an event subject to recordkeeping. The SOR will be updated with this information within seven (7) working days of the event, or the receipt of analytical data from the event.

3. WASTE ACCEPTANCE RATES

The three (3) most recent years of reports (Fiscal Years 2004, 2005 and 2006) indicate that the facility accepts approximately 166 tons of waste per operating day (tpd). A comparison of the current rate to historical rates (FY 2001) indicates an increase of approximately 11 tpd per year, or approximately 10.8% per year. Using this growth rate, the projected waste acceptance rate in 2020 is approximately 700 tpd. However, since this rate exceeds the rate of population growth, it is unlikely that it will be sustained.

A majority of this waste is collected and transported to the facility in vehicles operated by the City of Alice Sanitation Department. This allows the City to have significant control over the waste delivered to the facility for disposal. As outlined in subsequent sections, increases in waste acceptance rates may require additional personnel and equipment resources to ensure that this additional waste load are properly managed. The use of waste acceptance rates in this SOP is not intended to be a limiting parameter of the landfill permit, but is intended to ensure that the facility's operations continue to be adequate when waste acceptance rates increase. Facility management are responsible for assuring that adequate personnel and equipment resources are available to operate the site in accordance with this SOP and the requirements of the TCEQ.

4. PERSONNEL

4.1. Number, Categories and Qualifications of Personnel

A sufficient number of personnel will staff the facility during operating hours, in accordance with applicable regulations. Supervisory personnel will be experienced in landfill operations. All personnel will receive instruction on the design and operational standards included in the SOP and the SDP. The personnel requirements for operating the landfill are

SITE OPERATING PLAN
CITY OF ALICE MUNICIPAL SOLID WASTE LANDFILL
Permit No. MSW 262-C

outlined below. An organizational chart indicating the chain of command has been included in Appendix A. Each of the personnel classifications below may be fulfilled by a designated alternate from another category, provided the alternate has completed the training requirements of the category in which the individual is serving as an alternate.

4.1.1. Regulatory Contact

The Director of Public Works or another qualified person will be the primary point of contact for the City of Alice with the applicable regulatory agencies. This person is responsible for assuring proper reporting, notification and coordination with the TCEQ and other applicable regulatory agencies. The minimum qualifications for serving as the regulatory contact shall include a minimum of one (1) year of regulatory coordination experience and effective communication skills.

4.1.2. Landfill Superintendent

Operations at the site will be under the direct control of the Landfill Superintendent. The Landfill Superintendent will report to the Director of Public Works. The Director of Public Works or another qualified person designated by the City Manager will serve as the alternate for the Landfill Superintendent. The Landfill Superintendent will be responsible for implementing this SOP, for operating the site in accordance with the SDP and all related attachments, for serving as the emergency coordinator, and for maintaining the SOR and required logs. This person is also responsible for assuring that adequate personnel and equipment are available to provide facility operation in accordance with the SDP, SOP and TCEQ regulations. The minimum qualifications for this individual shall include a Class A solid waste operators license issued by the TCEQ and a minimum of three (3) years of landfill experience.

4.1.3. Landfill Disposal Clerk

The Landfill Disposal Clerk shall be responsible for checking and weighing each incoming load of waste, performing inspections for the exclusion of hazardous and special wastes, maintaining documentation, collecting fees, providing receipts and any other duty required for proper operation of the landfill. The minimum qualifications for this position shall be training by the Landfill Superintendent or other qualified individual in the SOP rules, recordkeeping requirements and waste screening training courses.

4.1.4. Landfill Heavy Equipment Operator

The Landfill Heavy Equipment Operator shall be responsible for operating landfill equipment and any other duty required for proper operation of the landfill. The minimum

SITE OPERATING PLAN
CITY OF ALICE MUNICIPAL SOLID WASTE LANDFILL
Permit No. MSW 262-C

qualifications for this individual include a minimum of six (6) months experience in equipment operation or on-the-job training by the Landfill Superintendent and training by the Landfill Superintendent or other qualified individual in the SOP rules, recordkeeping requirements and waste screening training courses.

4.1.5. Landfill Disposal Relief Operator

The Landfill Disposal Relief Operator shall be responsible for directing incoming traffic to the active disposal area and assisting the Landfill Heavy Equipment Operator in the disposal of waste. The Landfill Disposal Relief Operator shall also assist with waste screening, operate landfill equipment as needed and perform any other duty required for proper operation of the landfill. The minimum qualifications for this individual include a minimum of six (6) months experience in equipment operation or on-the-job training by the Landfill Superintendent and training by the Landfill Superintendent or other qualified individual in the SOP rules, recordkeeping requirements and waste screening training courses.

4.1.6. Landfill Crewperson

The Landfill Crewperson shall be responsible for picking up blowing debris, providing general labor around the facility, and any other duty required for proper operation of the landfill. The minimum qualifications for this individual include internal safety training and personnel protective equipment training.

4.2. Personnel Training Requirements

The following training is recommended to equip each of the identified personnel categories to perform their duties in a way that ensures the facility's compliance with this SOP and the TCEQ regulations. The training descriptions provided in the following sections are to be correlated with the training requirements by personnel category presented in Table 2, at the end of this section.

4.2.1. General Information on Personnel Training

The training requirements may be satisfied through either on-the-job training, classroom instruction, or a combination of both. This training must be directed by individuals trained in waste management and contingency plan implementation procedures and must include instruction on these procedures that is relevant to each individual job function. At a minimum, all site personnel shall receive training on Hazardous Waste Identification; Load Inspection/Prohibited Wastes; Random Inspections; Spill Prevention, Control and Countermeasures; and, Emergency Response, as presented below.

SITE OPERATING PLAN
CITY OF ALICE MUNICIPAL SOLID WASTE LANDFILL
Permit No. MSW 262-C

Prior to beginning an assignment at the facility, new employees shall receive Site Orientation and job-specific safety training. Within six (6) months of the assignment, the new employee shall receive the remaining training for their job classification as presented in this section. All required training shall be completed before the employee is allowed to perform their job functions without direct supervision. Within six months of beginning a new assignment at the facility, existing employees shall receive any additional training required for their new job classification as presented in this section. All required training shall be completed before the employee is allowed to perform their job functions without direct supervision.

Continuing training should be provided to ensure facility personnel are up to date on current practices within the industry. All facility personnel shall take part in an annual review of initial training. Both initial and continuing training must be documented in the SOR.

4.2.2. Site Orientation

This training involves a general orientation regarding the layout of the site, operations occurring in the different areas of the site, ingress/egress procedures, communications and alarm procedures and any other necessary information regarding the site.

4.2.3. Site Operations

This training involves providing detailed information on the operations occurring at the site, including the operation of equipment, standard procedures, recordkeeping, response to groundwater contamination, and facility shut-down requirements.

4.2.4. Endangered Species Protection

This training involves reviewing any requirements incorporated into permit documents regarding the protection of endangered species.

4.2.5. Hazardous Waste Identification

This training involves reviewing the regulatory definitions of hazardous wastes, typical types and sources of hazardous waste, response procedures if hazardous wastes are observed, and associated recordkeeping and reporting requirements.

4.2.6. Safety

This training involves general safety procedures for each job.

SITE OPERATING PLAN
CITY OF ALICE MUNICIPAL SOLID WASTE LANDFILL
 Permit No. MSW 262-C

4.2.7. Fire Prevention and Suppression

This training involves fire prevention activities and procedures and equipment for responding to and suppressing fires, managing with loads with on-board fires (“hot” loads) and coordinating outside assistance.

4.2.8. Load Inspection/Prohibited Wastes

This training involves recognition, exclusion, and management of prohibited and special wastes.

4.2.9. Spill Prevention, Control and Countermeasures

This training involves the proper storage and handling procedures for fuels, lubricants and other oils and hazardous materials, and procedures for responding to a spill or release of these materials.

4.2.10. Emergency Response/Contingency Plans

This training involves the procedures to be implemented in response to emergency conditions at the site, including fire, explosion, injury, or other dangerous situations. This training shall also include procedures for using, inspecting, repairing, and replacing facility emergency and monitoring equipment.

4.2.11. Litter Control

This training involves the procedures and equipment to prevent litter along the access routes to the facility and procedures and equipment to prevent solid waste from leaving the site.

4.2.12. Storm Water Pollution Prevention

This training involves the proper procedures and equipment for handling, collection, and disposal of first and second degree contaminated water as outlined in the Leachate and Contaminated Water Plan (LCWP) in Attachment 15 of the SDP, implementation of construction site storm water controls, and other storm water issues.

Table 2 – Training Requirements by Personnel Category

Subject Matter	Supt.	Clerk	H.E. Oper.	Rel. Oper.	Crewperson
Site Orientation	X	X	X	X	X
Site Operations	X	X	X		

SITE OPERATING PLAN
CITY OF ALICE MUNICIPAL SOLID WASTE LANDFILL
 Permit No. MSW 262-C

Endangered Species Protection	X	X	X	X	X
Hazardous Waste Identification	X	X	X	X	X
Safety (Job Specific)	X	X	X	X	X
Fire Prevention and Suppression	X	X	X	X	X
Load Inspection/ Prohibited Wastes	X	X	X	X	X
Spill Prevention, Control & Counter.	X	X	X	X	X
Emergency Response/Cont. Plans	X	X	X	X	X
Litter Control	X	X	X	X	X
Random Inspections	X	X	X		
Storm Water Pollution Prevention	X			X	

5. ON-SITE EQUIPMENT

Equipment used to operate the landfill is classified as either dedicated equipment or multi-use equipment. The general types of each classification of equipment are provided below. Table 3, at the end of this section presents the anticipated equipment requirements based on varying waste acceptance rates. In the event of equipment repairs or during equipment maintenance periods, the facility will obtain equipment from other facilities, contractors, or local rental companies to avoid interruption of waste services.

5.1. Dedicated Equipment

The following types of equipment will be maintained at the landfill for use in daily landfill operations:

5.1.1. Scale

A large truck scale will be used to weigh solid waste and construction materials. This scale will be installed at the location designated on the SDP.

5.1.2. Earthmovers/Scrapers

One or more earthmovers/scrapers will be used to move and place soil material for construction activities, cover and fire fighting activities, and if necessary, to move solid waste. Earthmovers will have a minimum power train of one hundred (150) horsepower (hp) and a minimum eleven (11) cubic yard (cy) bucket capacity.

SITE OPERATING PLAN
CITY OF ALICE MUNICIPAL SOLID WASTE LANDFILL
Permit No. MSW 262-C

5.1.3. Track Loaders

One or more track loaders will be used to move, place and compact soil material for construction activities, and to move and compact waste. If deemed appropriate by the Landfill Superintendent, track loaders may also be used as supplemental equipments for placing cover associated with fire fighting activities. Track Loaders will have a minimum power train of two hundred (200) hp.

5.1.4. Compactors

One or more compactors will be used for compacting solid waste and soil material for construction activities and cover. This compactor will have a minimum power train of one hundred fifty (150) hp and a minimum compactive force of 3,500 pounds (lbs) per foot of width.

5.1.5. Pumps

An adequate number of portable and fixed pumps will be maintained at the site to manage storm water and leachate in accordance with the Leachate and Contaminated Water Management Plan in Attachment 15 of the SDP. Separate pumps will be used to manage contaminated and uncontaminated water.

5.2. Multi-use Equipment

The following equipment will be available for use on an as-needed basis from other City departments:

- Dozers
- Loaders
- Maintainers
- Water Truck
- Street Sweeper
- Mower
- Backhoes
- Motor Grader
- Portable Pumps

In addition, rental equipment may be used as required.

SITE OPERATING PLAN
CITY OF ALICE MUNICIPAL SOLID WASTE LANDFILL
 Permit No. MSW 262-C

5.3. Equipment Requirements Based on Waste Acceptance Rate

The following table identifies specific types of equipment to be utilized in the landfill operation, based on the waste acceptance rate:

Table 3 – Equipment Requirement Based on Waste Acceptance Rate

Equipment Type	Minimum Number	Min. Size/Capacity	Function
Waste Acceptance Rate Up to 350 tons per day			
Earthmover/Scraper	1	150 hp/11 cy	Movement of soil for construction, cover and fire fighting activities, and movement of waste.
Compactor	1	250 hp/50,000 lbs	Waste and soil spreading and compaction
Track Loader	1	200 hp/50,000 lbs/4cy	Waste and soil spreading and compaction
Diesel Fuel Tank	1	1,000 gallons	Contain adequate supply of fuel
Water Truck	1	1,000 gallons	Provide water for on-site operations, including fire suppression and dust control
Temporary Fencing	3	16ft x 10 ft	Windblown litter control
Water Pumps	2	4"/20 gpm	Movement of water
Additional Equipment for Waste Acceptance Rate Between 350 tpd and 700 tpd			
Earthmover/Scraper	1 addn.	150 hp/11 cy	Movement of soil for construction, cover and fire fighting activities, and movement of waste.
Track Loader	1 addn.	200 hp/50,000 lbs/4cy	Waste and soil spreading and compaction
Temporary Fencing	3 addn	16ft x 10 ft	Windblown litter control
Water Pumps	1 addn.	4"/20 gpm	Movement of water

6. DETECTION AND PREVENTION OF DISPOSAL OF PROHIBITED WASTE, HAZARDOUS WASTE, AND PCBS

The following procedures have been established to detect and exclude prohibited wastes from the landfill. These procedures will apply to all incoming loads, including those transported by private operators and the general public.

SITE OPERATING PLAN

CITY OF ALICE MUNICIPAL SOLID WASTE LANDFILL

Permit No. MSW 262-C

6.1. Prohibited Wastes

The landfill is only authorized to receive municipal solid waste, including household and commercial waste, brush, construction and demolition waste, and certain special wastes (identified in Section 6.9). Disposal of the following wastes is specifically prohibited at the landfill and will not be intentionally or knowingly accepted for disposal:

- Regulated hazardous waste (other than municipal hazardous waste from Conditionally Exempt Small Quantity Generators [CESQGs]) as defined in Title 40 of the Code of Federal Regulations, Part 261 (40 CFR §261)
- Polychlorinated biphenyl (PCB) wastes as defined in 40 CFR §761; includes containers, equipment, and articles that contain PCBs in concentrations greater than fifty (50) parts per million (ppm)
- Lead acid storage batteries
- Used oil filters from internal combustion engines
- Do-it-yourself used motor vehicle oil
- Whole used or scrap tires
- Appliances containing chlorinated fluorocarbons (CFC)
- Bulk or noncontainerized liquid waste other than household waste;
- Septic waste;
- Containers of liquid waste except household waste or containers similar in size to those found in household waste; and,
- Medical waste consisting of recognizable human body parts, tissues, fetuses, organs, or the products of human abortions.

6.2. Special Wastes

Special waste is defined as any solid waste or combination of solid wastes that because of its quantity, concentration, physical or chemical characteristics, or biological properties, requires special handling and disposal to protect human health or the environment. Most of the special wastes listed below are prohibited unless prior written approval is obtained from the TCEQ. Some special wastes may be accepted at the landfill if the City of Alice chooses to do so. Any special wastes that the City of Alice chooses to accept will be properly handled and disposed as required by TCEQ regulations.

According to TCEQ regulations, the following special wastes could be accepted at the City of Alice Municipal Solid Waste Landfill. However, the City of Alice chooses not to accept these types of waste at this time.

- Hazardous waste from conditionally exempt small-quantity generators that may be exempt from full controls under 30 TAC §335.401-335.412 (related to Household

SITE OPERATING PLAN

CITY OF ALICE MUNICIPAL SOLID WASTE LANDFILL

Permit No. MSW 262-C

Materials Which Could Be Classified As Hazardous Waste) in quantities less than 220 lb/month per generator

- Special waste from health care related facilities, which has been treated in accordance with the provisions of 25 TAC §1.136(a), such as animal waste, bulk human blood and blood products, microbiological waste, pathological waste, and sharps
- Empty containers which have been used for pesticides, insecticides, herbicides, fungicides, or rodenticides.

According to TCEQ regulations, the following special wastes may be accepted at the City of Alice Municipal Solid Waste Landfill if the City of Alice chooses. At this time, the City chooses to accept these wastes, but reserves the right to restrict or terminate the acceptance of these wastes at any time. These wastes will be disposed as outlined in Section 6.9.

- Dead animals (from the City Humane Department only)
- Non-regulated asbestos-containing material.

The following special wastes may be accepted at the City of Alice Municipal Solid Waste Landfill if the City of Alice chooses, but only if the waste has been treated or processed and the treated or processed waste has been tested to pass the Paint Filter Test (EPA method 9095)

- Municipal wastewater treatment plant sludges, other types of domestic sewage treatment plant sludges, and water-supply treatment plant sludges;
- Grease and grit trap wastes.

The following special wastes will not be accepted at the City of Alice Municipal Solid Waste Landfill without the prior written approval of the TCEQ:

- Class I industrial nonhazardous waste not routinely collected with municipal solid waste;
- Municipal wastewater treatment plant sludges, other types of domestic sewage treatment plant sludges, and water-supply treatment plant sludges that do not pass the Paint Filter Liquids Test;
- Grease and grit trap wastes that do not pass the Paint Filter Liquids Test;
- Wastes from commercial or industrial wastewater treatment plants; air pollution control facilities; and tanks, drums, or containers used for shipping or storing any material that has been listed as a hazardous constituent in 40 CFR, Part 261, Appendix VIII, but has not been listed as a commercial chemical product in 40 CFR, §261.33(e) or (f);
- Drugs, contaminated foods, or contaminated beverages, other than those contained in normal household waste;
- Regulated asbestos-containing material;
- Incinerator ash;

SITE OPERATING PLAN

CITY OF ALICE MUNICIPAL SOLID WASTE LANDFILL

Permit No. MSW 262-C

- Soil contaminated by petroleum products, crude oils, or chemicals;
- Used oil;
- Light ballasts and/or small capacitors containing Polychlorinated biphenyl (PCB) compounds;
- Waste from oil, gas, and geothermal activities subject to regulation by the Railroad Commission of Texas; and,
- Waste generated outside the boundaries of Texas that contains:
 - Any industrial waste;
 - Any waste associated with oil, gas, and geothermal exploration, production, or development activities; or
 - Any item listed as a special waste in this list; any waste stream other than household or commercial garbage, refuse, or rubbish.

6.3. Site Entrance Procedures

The following procedures are followed at the site entrance to prevent the disposal of prohibited wastes.

6.3.1. Notifications

Persons who use the landfill shall be informed of prohibited wastes by one or more signs posted at the facility. The main site sign shall contain a list of prohibited items. Other signs may be placed at other locations within the facility to aid in the notification of prohibited items. The City shall also include in periodic utility billings an insert identifying prohibited items. Outside entities who contract to use the landfill shall also be notified of prohibited items.

6.3.2. Access Control

An important aspect of preventing the receipt of prohibited was is controlling access to the facility by unauthorized vehicles. Access control procedures are discussed in more detail in Section 8.

6.3.3. Documentation From Waste Transporters

Transporters will be required to provide documentation identifying the origin, characteristics, and quantity of all wastes. Transporters may be required to submit laboratory analysis for special wastes. Transporters unable to provide the required documentation will be refused entry to the landfill.

SITE OPERATING PLAN
CITY OF ALICE MUNICIPAL SOLID WASTE LANDFILL
Permit No. MSW 262-C

6.3.4. Documentation Requirements

The results of the entrance inspection will be recorded on the daily log form included in Appendix C along with other needed information such as the quantity of each type of waste and the fees charged. Completed log forms will be retained in the SOR. The Landfill Superintendent or a designated alternate will develop a daily summary record of the total volumes and types of wastes delivered to the site for inclusion in the SOR.

6.3.5. Entrance Inspections

The Landfill Disposal Clerk or an authorized alternate will visually inspect incoming waste loads for prohibited wastes. All transporters of incoming waste will be questioned concerning the nature and source of the waste. All landfill personnel observing waste loads entering the landfill shall be diligent in looking for loads from potential sources of prohibited wastes, such as:

- Industrial facilities
- Electronics manufacturers
- Metal plating industries
- Automotive and vehicle repair service companies
- Dry cleaning establishments

Landfill personnel should be trained to look for the following indications of prohibited waste:

- Yellow hazardous waste or PCB labels
- Department of Transportation (DOT) hazard placards or markings
- Liquids
- 55-gallon drums
- 85-gallon overpack drums
- Powders or dusts
- Odors or chemical fumes
- Bright or unusual colored wastes
- Sludges

6.3.6. Random Inspections

The Landfill Disposal Clerk or an authorized alternate will select certain incoming waste loads for a random inspection for prohibited wastes. This inspection will be done by landfill personnel, who will direct the load to an area out of the flow of normal traffic and further assess the load. As the load is dumped, the equipment operator will visually inspect the contents. Inspections will be performed by individuals trained to recognize

SITE OPERATING PLAN
CITY OF ALICE MUNICIPAL SOLID WASTE LANDFILL
Permit No. MSW 262-C

prohibited wastes. Inspections of compactor vehicles shall occur at a rate of at least one (1) per day that the facility is open and actually receives waste in compactor vehicles.

6.3.7. Procedures for Handling Suspected Prohibited Wastes

If any prohibited waste is identified or suspected in an incoming waste load, the City may use one (1) of two (2) procedures. If the prohibited items cannot safely be removed from the load, or if all or a portion of the load has been contaminated by the prohibited items, or if City personnel choose, they may reject the entire load. Alternatively, the City may elect to separate the prohibited items using the following steps:

- Remove the prohibited items from the load, and place them in the temporary storage area
- Properly dispose of the remaining allowable wastes
- Pick up the previously removed prohibited items prior to leaving the site, and place on transport vehicle.

The Landfill Disposal Clerk will provide transporters with a copy of Appendix B, which furnishes a list of prohibited and special wastes and the site procedures for preventing the disposal of prohibited wastes at the landfill.

6.4. Detection of Prohibited Wastes During or After Placement

The following procedures will be followed if prohibited wastes are detected during or after placement in the active disposal area.

6.4.1. Identification of the Waste

If the Landfill Heavy Equipment Operator or other landfill personnel identify the presence of prohibited wastes during or after placement of the waste in the landfill, the landfilling operation will immediately be stopped. The nature and source of the waste will be identified and recorded. The waste transporter will be questioned for additional information if still present.

6.4.2. Removal of the Waste

If the waste is confirmed to be a prohibited type of waste, it must be removed from the landfill and properly disposed of at an authorized facility. If the prohibited waste contains a regulated hazardous waste or PCBs, the TCEQ shall be notified. No further disposal of authorized waste will take place in the affected area until any necessary remediation has been completed. If the requirement for removal of the waste or remediation is not clear, the City of Alice will contact the TCEQ for a determination.

SITE OPERATING PLAN

CITY OF ALICE MUNICIPAL SOLID WASTE LANDFILL

Permit No. MSW 262-C

Typical required remediation consists of removal and disposal of contaminated soil and solid waste at an authorized facility. In addition, if the presence of the prohibited waste results in an emergency situation, the local Fire Department and the TCEQ Emergency Response Unit will be contacted. A copy of any notifications submitted to the TCEQ will also be forwarded to any local pollution agency with jurisdiction that has requested to be notified.

The following guidelines for prohibited waste disposal and remediation responsibilities apply:

- If the transporter of the prohibited waste is still present, the waste will be reloaded onto the vehicle that transported it to the landfill. The waste transporter will be billed for any necessary remediation.
- If the responsible waste transporter has been identified but is no longer on the site, the City of Alice will remove the waste from the working face of the landfill. If the prohibited waste can be safely stored on-site, the responsible waste hauler will be notified to return to the landfill to remove and properly dispose of the waste. If the waste cannot be safely stored at the landfill, the City of Alice will properly dispose of the waste. The responsible transporter will be billed for the waste disposal and any necessary remediation.
- If the landfill personnel are unable to identify the source of the prohibited waste, the City of Alice will bear the responsibility of the proper disposal of the waste and for any necessary remediation.

6.4.3. Record Keeping and Reporting

The Landfill Superintendent or a designated alternate will record the type of prohibited waste that was identified and the resulting actions taken to remove and remediate the prohibited waste on the form provided in Appendix C. A copy of the form will be filed in the SOR. If the prohibited waste discovered during placement in the landfill is a regulated hazardous waste or a PCB waste, the form will also be forwarded to the TCEQ. A copy of any notifications submitted to the TCEQ will also be forwarded to any local pollution agency with jurisdiction that has requested to be notified.

7. FIRE PROECTION PLAN

Open burning is prohibited at the landfill site, except on an infrequent basis of specific wastes as may be authorized by the TCEQ. The Landfill Superintendent will be responsible for assuring that adequate equipment and personnel are available to respond to fires that may occur at the landfill, and if the response resources are not adequate, for summoning outside assistance. The different types of fires that may occur at the landfill will be addressed as outlined below.

SITE OPERATING PLAN
CITY OF ALICE MUNICIPAL SOLID WASTE LANDFILL
Permit No. MSW 262-C

7.1. Personnel Requirements

All facility personnel participating in fire response and suppression activities shall receive training as outlined in Section 4.2.7. All the response actions identified in this plan are intended to be conducted only if it is safe to do so. In any condition where it is unsafe for facility personnel to respond, they should retreat to a safe location and summon outside assistance immediately. Personnel taking response actions under this SOP should abide by the following guidelines:

- Do not attempt to fight a fire prior to notification of other on-site personnel.
- Do not attempt to fight a fire alone.
- Do not attempt to fight a fire without adequate personnel protective equipment.
- Do not attempt to utilize fire fighting equipment or personnel protective equipment for which the user has not been trained.

7.2. Outside Assistance

Outside assistance will be provided by the City of Alice Fire Department. The City of Alice Fire Department services Jim Wells County and will be on call for any fires which may occur at the landfill. The Fire Department has large tanker trucks available to deliver water at the site for any fire related problems which may occur.

At least once each year the Landfill Superintendent or designated representative shall coordinate with the City of Alice Fire Department. This coordination shall consist of a review of the activities conducted at the landfill, the ingress/egress and internal facility access routes, the types and quantities of flammable and combustible materials present at the site, and identification of the nearest available water sources for fire fighting purposes.

7.3. Fire Prevention Activities

7.3.1. Smoking

No smoking is allowed in operating areas of the facility or while operating equipment or while handling wastes, fuels or lubricants, or when monitoring for landfill gas. Smoking shall be confined to designated areas that are away from fire-sensitive items.

7.3.2. Materials Storage

Wastes, products, salvaged materials, materials stored for recycling, fuels, lubricants and all other flammable or combustible materials shall be stored in a manner to minimize the occurrence and spread of fire at the site. Specific fire prevention steps are presented below, based on the type of materials stored.

SITE OPERATING PLAN
CITY OF ALICE MUNICIPAL SOLID WASTE LANDFILL
Permit No. MSW 262-C

7.3.2.1. Fuels, Lubricants and Other Flammable Liquids

Fuels, lubricants and other flammable liquids shall be stored in appropriate containers, compatible with the materials being stored. These containers shall have their fill and discharge opening closed except when materials are being transferred into or out of the containers. The bulk storage of fuels, lubricants and other flammable liquids shall occur in the designated storage area. This area shall be properly labeled and posted with notices indicating the presence of flammable liquids, designating the surrounding area as a “no smoking” zone, and indicating that personnel are to extinguish potential ignition sources prior to opening containers or transferring flammable liquids. During re-fueling of mobile equipment, the engine shall be turned off.

Prior to the transfer of liquids into these containers, the liquid levels will be measured or assessed to determine the amount of liquid to be transferred and the capacity available to receive the transfer. Piping and/or hoses will be inspected to ensure that all connections and fittings are properly joined and secured. Portable secondary containment pans will be placed under transfer line connections and fittings to collect any leakage. Pumps and/or transfer equipment will be inspected to ensure that they are in proper working order.

All liquid transfer operations are to be attended by the personnel responsible for the transfer during the entire duration of the transfer. Contractor or vendor personnel responsible for making liquids transfers shall be properly instructed by facility personnel and should be periodically observed to ensure they are following proper procedures. Personnel making liquids transfers shall visually observe the transfer operation and immediately discontinue the transfer if a spill or overfill occurs. The volume and rate of material transferred by pump or vacuum truck will be monitored using available equipment to prevent over-filling and/or spills. If the transfer involves a vehicle, the vehicle wheels are to be chocked to keep them from moving until the transfer has been completed. Manual transfers should be performed at a controlled rate, using appropriate flow control devices (e.g. buckets, spouts, funnels, etc) to prevent spills during the transfer.

Any spill which occur shall be promptly cleaned up with the waster and/or residuals managed in accordance with local, state and federal requirements. The proper storage, containment and handling of flammable liquids will minimize fire and explosion risks.

SITE OPERATING PLAN
CITY OF ALICE MUNICIPAL SOLID WASTE LANDFILL
Permit No. MSW 262-C

7.3.2.2. Used Tires

Whole used tires accumulated at the facility will be stored inside trailers, vans or other portable structures. Used tires that are shredded, cut, or otherwise mechanically reduced may be stored outdoors. The accumulation of used tires on the site shall be controlled to prevent excessive quantities from being present at the landfill. If as a result of normal accumulation an excessive quantity of tires becomes present at the site, these tires shall be stored in multiple areas, with a separation distance to minimize the occurrence and spread of fire.

7.3.2.3. Salvage Areas

As noted elsewhere in this SOP, there will be designated salvage areas at the facility. While the majority of items anticipated for salvage will be non-combustible (e.g. appliances, metal items, etc.), it is possible that some combustible materials may also be salvaged (e.g. cardboard, brush, etc.). If combustible materials are accumulated on site, these materials shall be stored in multiple areas, with a separation distance to minimize the occurrence and spread of fire. These areas shall also be properly labeled and posted with notices indicating the presence of combustible materials, designating the surrounding area as a “no smoking” zone, and indicating that personnel are to extinguish potential ignition sources prior to handling combustible materials.

7.3.3. Vegetative Management

Fire breaks will be provided around the operating areas of the site. The growth of trees, brush and vegetation on-site shall be controlled to prevent brush fires from spreading onto or off of the landfill site.

7.3.4. Portable Fire Extinguishers

The site shall be equipped with appropriate portable fire extinguishers of the type, size, location and number as indicated in this SOP and as required by the City of Alice Fire Department. Portable extinguishers shall be fully charged, ready for use at all times, inspected on an annual basis, and recharged as necessary. Installation, inspection and servicing of portable extinguishers shall be conducted by qualified and properly licensed individuals, in compliance with local, state and national fire protection regulations.

SITE OPERATING PLAN
CITY OF ALICE MUNICIPAL SOLID WASTE LANDFILL
Permit No. MSW 262-C

7.4. Initial Response Actions

7.4.1. Condition Assessment

As soon as fire is observed, facility personnel shall perform an assessment of the situation. This assessment should include the extent of the fire, the possibility for it to spread, alternatives for extinguishing the fire, and any conditions which may affect fire response efforts (e.g. high winds, access restrictions, etc.). Following this assessment, operating personnel should immediately notify the Landfill Superintendent and/or the Landfill Disposal Clerk prior to conducting any other fire response procedures. In coordination with Landfill Superintendent or the Landfill Disposal Clerk, a decision should be made as to whether the fire response can be conducted utilizing on-site resources or whether outside assistance is required.

7.4.2. Summoning Outside Assistance

If the decision is made to summon outside assistance in response to a fire, the Landfill Disposal Clerk of designated alternate shall contact the City of Alice Fire Department utilizing either telephone or City radios. The City of Alice Fire Department may be reached from the landfill site via telephone by dialing 911. A listing of emergency contact numbers shall be posted near each telephone at the site. Once contact with the City of Alice Fire Department has been established, state clearly that there is a fire at the landfill requiring outside assistance, communicate any available information on the source and extent of the fire and any site conditions which may affect fire fighting efforts. Remain in contact with Fire Department personnel to respond to any questions or requests for additional information. Provide a call-back number at the landfill where the Fire Department can contact landfill personnel if additional communication is required.

7.5. Fire Suppression Actions by Type of Fire

7.5.1. Equipment or Fixture Fires

The initial suppression activity for fires occurring on or associated with equipment and fixtures shall be an attempt to extinguish the fire with available on-site equipment. If a fire occurs on a moving vehicle or piece of equipment, the first response action shall be to bring the vehicle or equipment to a safe stop. If possible, mobile vehicles with on-board fires should be directed away from sources of flammable/combustible materials which could result in a fire spreading from the mobile vehicle to stationary sources. Each piece of mobile equipment shall be outfitted with a portable fire extinguisher rated for Class A (combustible materials) and Class B (flammable/combustible liquid) fires (A/B extinguisher), as identified in Title 29, Code of Federal Regulations, Chapter 1910,

SITE OPERATING PLAN

CITY OF ALICE MUNICIPAL SOLID WASTE LANDFILL

Permit No. MSW 262-C

Subchapter L (29 CFR §1910-L). Additional portable A/B extinguishers shall be mounted near the scale house and near the on-site fuel tanks. Portable extinguishers rated for Class C (energized electrical system) fires (as per 29 CFR §1910-L) shall be located near the electrical control panels for the scale and the leachate collection equipment. In response to a fire on or associated with equipment or fixtures, trained facility personnel will attempt to suppress the fire utilizing available on-site equipment, including the portable extinguishers.

For Class A or B fires, the suppression efforts using the portable extinguishers may be supplemented with additional response actions including suppression with water or soil, if appropriate. If the fire cannot be contained using these initial response procedures, the City of Alice Fire Department should be summoned.

For Class C fires, the initial suppression efforts should be concurrent with an attempt to safely de-energize the electrical system.

7.5.2. Fires Associated with Waste Disposal Operations

Fire suppression methods for burning solid waste include smothering with soil, separating burning material from other waste, spraying with water from on-site sources, or the use of portable extinguishers. If the fire is at an active disposal area, if possible, the burning waste should be isolated or pushed away immediately before the fire can spread, or firebreaks should be cut around the fire before it can spread. This work can be accomplished using a compactor, dozer or other suitable equipment. Small fires may be suppressed utilizing a portable A/B extinguisher. If moving the waste is not possible, or if it is unsafe, efforts should be made to cover the working face with earth immediately to smother the fire. The faster the soil can be placed over the fire, the more effective this method will be in controlling and extinguishing the fire. In response to a fire, previously placed daily cover may be scavenged from adjacent, unaffected areas. Any daily cover so scavenged with must be replaced before ceasing operations that day.

Calculations regarding the ability of the facility to cover the working face in the event of a fire have been included in Appendix E. Based on a working face size of seventy five (75) feet by one hundred (100) feet, these calculations indicated that a minimum stockpile of approximately 185 cubic yards of earth would be required to completely cover the working face. To be able to satisfy the requirement to place this cover within one (1) hour of a fire occurring, it would be necessary to move approximately three (3) cubic yards per minute. Using equipment available at the landfill, this could be accomplished using a earthmover/scrapper with a stockpile in close proximity to the working face (less than two minute per load round trip time travel time). Soil adequate for covering the entire working face will be stockpiled within 880 feet of the working

SITE OPERATING PLAN

CITY OF ALICE MUNICIPAL SOLID WASTE LANDFILL

Permit No. MSW 262-C

face. Equipment to move the stockpiled soil in the event of a fire will be on-site at the landfill at all times. Additional pieces of available equipment may also be utilized to remove material from further away or to move material from the stockpile to speed the process along faster than the scenario presented in the calculations.

7.5.3. Fires Associated with Incoming Loads

The Landfill Disposal Clerk shall be responsible for inspect each load for indications of smoke or steam. Incoming loads that are smoking, steaming, or suspected of being "hot" shall be diverted from the working face and isolated in the designated "hot" load isolation area. If it is safe to do so, the contents of the load will be dumped on the ground at a secure location to allow the load to be inspected. Any fire will then be extinguished using soil, water or portable extinguishers following the general procedures outlined above.

Landfill personnel and equipment operators shall observe the unloading of waste to assure that fire or smoldering materials are not present. Burning waste shall not be discharged or unloaded at the working face or in other fire-sensitive areas.

The initial designated "hot" load isolation area shall be to the east of the leachate/contaminated water storage area. One or more alternate locations may be designated by the Landfill Superintendent based on the nature of the "hot" load involved, the development of the site, any conditions present in the initially designated "hot" load isolation area which would make it unsuitable. The designated "hot" load isolation area shall be reviewed at least annually. The Landfill Superintendent shall ensure that instructions are posted with the Landfill Disposal Clerk for managing "hot" loads. The site orientation training shall also familiarize facility personnel with the "hot" load isolation area.

7.5.4. Other Types of Fires

Suppression procedures for fires occurring at the facility that do not fall into one of the specific categories outlined above shall generally follow the procedures for fires associated with waste disposal activities.

7.6. Incident Follow-up

TCEQ regulations require the landfill permit holder (the City of Alice) to notify the TCEQ regional office of any fires related to waste management activities that cannot be extinguished within ten (10) minutes following discovery. For fires which require notice, telephone contact shall be made as soon as possible, but in no case later than four (4) hours

SITE OPERATING PLAN
CITY OF ALICE MUNICIPAL SOLID WASTE LANDFILL
Permit No. MSW 262-C

after discovery. A written description of the cause and extent of the fire and the resulting fire response must be submitted to the TCEQ region office within fourteen (14) days of fire detection.

8. ACCESS CONTROL

In accordance with TCEQ regulations, access control for the facility is provided through a combination of facilities and procedures. These access control features are intended to provide for the safe operation of the landfill by minimizing unauthorized vehicular traffic, unauthorized and illegal dumping, and public exposure to hazards associated with the landfill.

8.1. Site Access Control Facilities

Site access control facilities are described in Section 3.5 of the SDP. The entire landfill site is encompassed by a perimeter fence to prevent unauthorized access. Specific requirements for the fencing are included in the SDP. The entrance gates both on the frontage road for U.S. Highway 281 and at the end of the access road on the landfill property boundary will be closed and locked outside of normal landfill operating hours. The perimeter fence and entrance gates will be monitored and inspected at least quarterly and repaired as needed to maintain access control.

In the event that a breach is discovered in an access control facility, repairs to the facility must be completed within twenty four (24) hours. If permanent repairs cannot be completed within eight (8) hours, notification to the TCEQ regional office should be forwarded within twenty four (24) hours, following the procedures outlined in Section 8.3. If notice is required, permanent repairs shall be completed in accordance with the schedule included in the initial notification.

8.2. Site Access Control Procedures

During working hours, the Landfill Disposal Clerk or a designated alternate will control and direct incoming traffic. If needed, wind-rowed berms may be constructed and maintained along internal landfill roads where necessary to keep the public in authorized areas. Visitors (personnel other than landfill personnel, authorized waste transporters, or other authorized individuals) to the active disposal area must be accompanied by a landfill site representative.

Waste transporters entering into unauthorized areas may be requested to return to designated areas, charged a surcharge, or refused subsequent entry into the landfill, depending on the history of the individuals involved. Unauthorized entry of non-landfill personnel onto the site either during or outside of working hours may result in prosecution.

SITE OPERATING PLAN
CITY OF ALICE MUNICIPAL SOLID WASTE LANDFILL
Permit No. MSW 262-C

8.3. Notifications Regarding Access Breaches

TCEQ regulations require the landfill permit holder (the City of Alice) to notify the TCEQ regional office of any access breaches which cannot be permanently repaired within eight (8) hours. If notice is required, this notice must be submitted within twenty four (24) hours to the TCEQ region office and any other local pollution control agency with jurisdiction over the site. The notice should describe the breach and identify a schedule for completing permanent repairs. A notice must also be submitted to the TCEQ regional office when a permanent access control breach repair is completed.

9. UNLOADING OF WASTE

Waste will be unloaded only at properly designated locations such as the working face, any waste recycling and processing areas, any special waste processing areas, or the designated temporary storage area. No solid waste unloading, storage, disposal, or processing will occur within any easements, the buffer zone, or any right-of-way that crosses the site. The Landfill Disposal Clerk or a properly trained designated alternate will be present at the entrance at all times during waste acceptance hours to monitor all incoming loads of waste, and will direct traffic to the appropriate unloading area. There will be one general purpose waste unloading area. Either a Landfill Heavy Equipment Operator, a Landfill Disposal Relief Operator, or a properly trained designated alternate will also be on duty during operating hours at the working face to direct and monitor unloading of solid waste. Any waste deposited in an unauthorized area will be promptly removed and disposed of properly. If the responsible waste transporter is known, a surcharge will be assessed.

The Landfill Disposal Clerk, the Landfill Heavy Equipment Operator, the Landfill Disposal Relief Operator, and/or a properly trained designated alternate will monitor the incoming waste. These personnel will be familiar with the rules and regulations governing the various types of waste that can or cannot be accepted into the facility, including knowledge of 30 TAC §330.133, regarding the unloading of waste. The personnel will also have a basic understanding of both industrial and hazardous waste and their transportation and disposal requirements. The facility is not required to accept any solid waste that may cause problems in maintaining full and continuous compliance with the permit.

The active working face will be kept as small as possible. The maximum size of the unloading area will be seventy five (75) feet by one hundred (100) feet. Waste unloading at the active face will be closely supervised by on-duty landfill personnel. Waste will be unloaded at the toe of the working face, pushed up onto the face of the fill, and then thoroughly compacted. Proper cover will be applied daily.

SITE OPERATING PLAN
CITY OF ALICE MUNICIPAL SOLID WASTE LANDFILL
Permit No. MSW 262-C

10. FACILITY OPERATING HOURS

The facility permit authorizes landfill operating hours as 7:00 A.M. to 7:00 P.M. with no restriction on the number of days per week. The facility will be open to accept waste from 8:00 A.M. to 5:00 P.M, Monday through Friday, and from 8:00 A.M. to 3:00 P.M. on Saturday. By notification to the TCEQ, the City may extend the waste acceptance hours at the facility to include 7:00 A.M. to 7:00 P.M., seven (7) days per week as currently authorized in the facility permit. Construction activities, transporting material into or out of the landfill, and the operating of heavy equipment will be conducted between the hours of 7:00 A.M. and 7:00 P.M. seven days a week. As authorized under the TCEQ regulations, the City may request the approval of alternate operating and/or waste acceptance hours for up to five (5) days in a one-year period to accommodate special occasions, special purpose events or holidays. In addition, the City may request temporary authorization from the TCEQ regional office to expand the identified waste acceptance and operating hours in response to disasters, emergency situations or other unforeseen circumstances that could result in a disruption of waste receipt at the facility. In the event that alternative operating hours are utilized as outlined above, the City shall record the dates, times and duration of these alternative operating hours in the SOR.

11. SITE SIGN

The site sign will be located at the entrance to the site off of the U.S. Highway 281 access road. It shall be a minimum four (4) feet square with minimum three (3) inch letters stating the name of the site, the type of site, hours and days of operations, and the site permit number. The site sign shall also have an emergency twenty four (24) hour contact phone number or numbers that reach a key landfill staff person with the authority to obligate the facility at all times that the facility is closed. The sign shall also have the contact information for the City of Alice Fire Department. The site sign shall be visible at the facility entrance and shall contain the following declarations:

- Receipt of hazardous waste and closed drums are prohibited
- Smoking is prohibited at the facility, except in designated areas
- All loads must be properly covered or otherwise secured

12. CONTROL OF WINDBLOWN SOLID WASTE AND LITTER

12.1. Load Covering Requirement

All vehicles and equipment used to transport solid waste susceptible to blowing or spilling must be covered to prevent loss of material during transportation. Violation of the load covering requirement will result in an additional surcharge cost or the refusal to accept the particular load due to uncovered conditions.

SITE OPERATING PLAN

CITY OF ALICE MUNICIPAL SOLID WASTE LANDFILL

Permit No. MSW 262-C

12.2. Control of Windblown Waste and Litter from the Working Face

Litter and windblown waste will be collected and returned to the working face to minimize unhealthy, unsafe, or unsightly conditions. The unloading of waste in unauthorized areas is prohibited. Landfill personnel will monitor the site and adjoining land on all operating days, and collect all litter and windblown material for disposal at the active face. Special attention will be given to areas along access roads and fencelines.

The fill operation will be planned to minimize the effect of the prevailing wind. If windblown material is generated, landfill personnel will be responsible for returning it to the fill area. During fill operations, portable fencing may be used if needed to control windblown wastes. If a portable fence is not practical, other suitable practices will be employed to control windblown material.

Daily cover will be placed on top of the waste lift as soon as it is practical for any portion of the lift that reaches recommended lift height. The working face will be covered daily.

13. EASEMENTS AND BUFFER ZONES

No solid waste operations should occur in any easement, buffer zone, or right-of-way. No solid waste shall be deposited within twenty five (25) feet of a pipeline or utility. All easements shall be marked in accordance with TCEQ rules, as outlined in the SDP in Part III of the application. A minimum fifty (50) feet shall be maintained between the waste activities and the site boundary. Adequate space will be maintained for the passage of emergency vehicles. All easements and buffer zones shall be marked as identified in the following section.

The Southern Gas natural gas pipeline traversing part of the eastern portion of the site is protected by concrete slabs placed over the width of the easement at locations where access and perimeter roads cross the pipeline.

American Electric Power has a blanket easement to provide electrical service the landfill. As the landfill develops, the power lines and poles may be moved or portions of the easement abandoned, as required.

A forty foot (40') permanent access easement is located at the western boundary of the site. The landfill entrance will be relocated to this easement, accessing off of County Road 118, when filling progresses to Section F, as outlined in the SDP.

14. LANDFILL MARKERS AND BENCHMARK

Landfill markers and a site benchmark will be placed as described in the SDP to indicate the locations of permit boundaries, buffer zones, easements, grid locations, disposal areas with an

SITE OPERATING PLAN
CITY OF ALICE MUNICIPAL SOLID WASTE LANDFILL
Permit No. MSW 262-C

approved SLER and GLER, flood areas, the site benchmark, and survey control points. The markers shall be steel or wooden posts and extend at least six (6) feet above ground surface. The markers will be permanently un-obscured by vegetation and will be placed in sufficient numbers to clearly indicate the required boundaries. Markers shall be inspected on a monthly basis and should be maintained and repaired as needed, based on the results of the monthly inspection. All landfill markers and signs will be repainted as necessary to retain visibility. Markers that are removed or damaged will be repaired or replaced within fifteen (15) days.

Guidelines for the type, placement and color coding of markers are provided in , below.

Table 4 – Required Landfill Markers

Marker Type	Color.
Site Boundary	Black
Buffer Zone	Yellow
Easements	Green
Grid System	White
SLER/GLER	Red
Floodplain	Blue

A permanent benchmark has been established at the site as shown on Attachment 1 of the SDP. It is located in an area that is readily accessible and will not be used for disposal. The benchmark is a bronze survey marker stamped with the elevation and the survey date and is set in concrete.

15. MATERIALS ALONG ACCESS ROUTES OFF SITE

The facility will take steps to encourage that vehicles and equipment transporting waste to the landfill are enclosed, properly covered, or otherwise secured to prevent the escape of any part of the load by blowing or spilling. The City of Alice will take actions such as posting notice signs, reporting offenders to proper law enforcement officers, adding surcharges, or similar measures. On days when the facility is open to accept waste, the City of Alice shall be responsible for at least once per day cleanup of any waste materials spilled along the right-of-way of public access roads leading to the landfill for a distance of two (2) miles in either direction from the landfill entrance. The Landfill Superintendent or his designated alternate will coordinate with the Texas Department of Transportation, county and other local government officials having maintenance authority concerning cleanup of public access roads and rights-of-way.

16. DISPOSAL OF LARGE ITEMS

Large, heavy, or bulky items which cannot be incorporated in the regular spreading, compaction and covering operations at the landfill may be recycled. Items such as household appliances

SITE OPERATING PLAN
CITY OF ALICE MUNICIPAL SOLID WASTE LANDFILL
Permit No. MSW 262-C

(white goods), air conditioning units, metal tanks, large metal pieces, and automobiles may also be prohibited by the City. If they are accepted, they will be unloaded at a collection area on-site, designated as the large-item salvage area. The bulky items will be salvaged or recycled to the greatest extent possible. The Landfill Superintendent or a designated alternate will review the contents of the area periodically and ensure removal of items in a timely manner to prevent the discharge of any pollutants associated with the items. No items containing chlorinated fluorocarbons (CFC) will be accepted by the landfill for disposal or recycling. The waste generator or transporter must provide written certification that the CFC has been properly evacuated from the item, in accordance with 40 CFR §82.156(f), as amended, before the item can be allowed on-site. Large items which are not to be recycled and are instead placed into the landfill, are to be excluded from the initial five (5) feet of waste placed over the protective cover of a liner. These large items shall be placed such that they do not interfere with continued waste filling and shall be surrounded by either smaller municipal solid waste or soil cover which will be placed and compacted around the large item.

17. ODOR MANAGEMENT PLAN

17.1. General Requirements

The landfill will comply with any applicable air pollution control and burning regulations promulgated by the TCEQ. The landfill is not located in an area of non-attainment as defined by the Clean Air Act. However, the site is to be operated in compliance with applicable requirements of the approved State Implementation Plan developed under the Federal Clean Air Act, §110, as amended, and 30 TAC 330.5(d), which prohibits open burning of waste. The facility will be operated such that it does not violate any applicable air quality requirement in the LGMP, Attachment 14 of the SDP. The open burning of solid waste, except for the infrequent burning of waste generated by land-clearing operations, agricultural waste, silvicultural waste, diseased trees, and emergency cleanup operations as authorized by the TCEQ, is prohibited at the facility.

17.2. Odor Management

Potential odor sources associated with a municipal solid waste landfill include the wastes being delivered to the facility, the open working face, ponded water and landfill gas. Many of the wastes received at a landfill are a source of odor upon receipt, such as sludges and dead animals. Other wastes have the potential for becoming sources as they biodegrade during the decomposition process.

Control of odors created by ponded water or disposal of solid waste will be addressed as necessary. Methods used to control odors include waste management procedures, the placement of cover materials, the control of ponded water, and landfill gas control. These

SITE OPERATING PLAN
CITY OF ALICE MUNICIPAL SOLID WASTE LANDFILL
Permit No. MSW 262-C

methods, described below, are also included in Part III of the facility's SDP and LGMP, as appropriate.

Wastes will be deposited at the working face, spread into layers that can be readily compacted, and covered with a minimum of six (6) inches of soil or with an approved alternate daily cover material. Dead animals will be covered immediately upon placement into the working face with three feet of waste or two feet of soil. Waste that is identified as particularly odorous by the Landfill Disposal Clerk or equipment operator will be buried immediately upon receipt in the working face, with prompt compaction and covered with incoming waste and/or daily cover.

Leachate and contaminated water will be managed to minimize the potential for odors. Leachate and contaminated water removed from the landfills will be stored in the leachate and contaminated water storage area described in the Leachate and Contaminated Water Plan (LCWP). These tanks shall be enclosed to minimize the escape of odors from the accumulated leachate. As presented in the LCWP, there are several options available for recirculation of leachate onto the active area of the landfill. During leachate recirculation, facility personnel will monitor the recirculation efforts for objectionable odors. If such objectionable odors occur, the City may elect to utilize one of the other approved recirculation methods to reduce odors. If all of the approved leachate recirculation methods result in objectionable odors, the City may transfer the leachate to an off-site facility for treatment and/or disposal. Any such transfers shall be made in enclosed tanks.

Whole used tires accumulated at the facility will be stored inside trailers, vans or other portable structures to prevent them from capturing and retaining water, which may be a potential source of odors. Used tires that are shredded, cut, or otherwise mechanically reduced may be stored outdoors. If objectionable odors result from the outdoor storage of reduced tires, these tires will either be transferred into covered storage, will be sent off-site, or will be disposed in the landfill.

As indicated previously, the majority of items anticipated for storage in the large item salvage area will be non-combustible (e.g. appliances, metal items, etc.), it is possible that some materials may also be salvaged (e.g. cardboard, brush, etc.) that can generate odors if allowed to become wet. If objectionable odors result from the outdoor storage of these items, they will either be covered, transferred into covered storage, sent off-site, or disposed in the landfill.

SITE OPERATING PLAN
CITY OF ALICE MUNICIPAL SOLID WASTE LANDFILL
Permit No. MSW 262-C

18. DISEASE VECTOR CONTROL

The need for control of vectors such as rodents, flies and mosquitoes at landfills will be minimized through daily site operations, which include the application of daily, intermediate and final cover. The facility will also minimize the extent of the working face to control vectors.

The solid waste fill will be properly covered daily to minimize disease vector potential. Windblown or spilled waste will be collected and deposited at the active disposal area daily. The active disposal area will be routinely inspected by landfill personnel for evidence of disease vectors. If vectors become evident, measures will be implemented to eliminate them. If necessary, a licensed professional will apply pesticides for control of vectors to ensure that proper chemicals are used and that they are properly applied.

19. SITE ACCESS ROADS

Facility operations will be conducted to allow proper access to the facility and to minimize safety and nuisance hazards associated with tracked mud, litter, associated debris and dust.

19.1. Collection of Litter and Other Debris

Litter and any other debris on-site and other access roadways will be picked up at least once a day during days the facility is open to accept waste. Collected waste shall be taken to the disposal area.

19.2. Tracked Mud and Associated Debris

For tracking of mud and trash onto public roadways, the paved entrance road and the all-weather internal roadways will provide mud control for the waste hauling vehicles prior to exiting the site and returning to public access roads. Tracked mud and associated debris at the entrance to the facility and on the public roadway at the entrance to the facility and trash on the public roadways will be removed at least once per day on days when mud and associated debris are being tracked onto the public roadway, to the extent that the mud can be reasonably considered to be associated with landfill operations. Street sweeper type equipment will be used as the primary tool to remove mud accumulations on roads. Grading equipment will be used as necessary to control or remove mud accumulations on roads. Records will be kept in the SOR to demonstrate compliance with this requirement.

19.3. Dust Control

Dust from on-site and other access roadways will not become a nuisance to surrounding areas. Landfill haul roads and access roads will be maintained in a reasonable dust-free condition by periodic dust control measures. These measures shall include a water source

SITE OPERATING PLAN
CITY OF ALICE MUNICIPAL SOLID WASTE LANDFILL
Permit No. MSW 262-C

and necessary equipment to periodically spray the roadways or other means of dust control approved by the TCEQ.

19.4. Roadway Maintenance

Access roadways will be re-graded to minimize depressions, ruts, and potholes. For maintenance of on-site and other access roadways, in addition to stockpiles of roadway materials, the City may stockpile concrete rubble, masonry, or other similar material used in maintaining passable access roads. Access roadways will be inspected on a monthly basis, with any necessary re-grading performed within one (1) week following inspection.

20. SALVAGING AND SCAVENGING

Materials may be salvaged by City personnel for recycle before and during placement of the waste at the active disposal area. However, salvaging will not be allowed to interfere with the prompt and sanitary disposal of solid waste. Salvaged materials will be stored at a designated area on-site. The Landfill Superintendent or a designated alternate will review the contents of the area periodically and ensure removal of items in a timely manner to prevent the discharge of any pollutants associated with the items and to prevent odors or other nuisances. Class I industrial and special wastes will not be salvaged. Likewise, pesticide, fungicide, rodenticide, and herbicide containers will not be salvaged except under a State supported recycling program. In addition, the City may perform salvage operations in the temporary storage area. Scavenging of waste will not be allowed. Salvaging of wastes must not occur where the waste has been covered with daily cover.

21. ENDANGERED SPECIES PROTECTION

An endangered species assessment was conducted when the permit for the facility was amended in 1997. This assessment was conducted by a qualified biologist, in consultation with state and federal wildlife resource preservation agencies and concluded that the proposed landfill operations would not destroy or adversely modify critical habitat of endangered or threatened species. The landfill will be operated in conformance with any endangered or threatened species protection plan required by the TCEQ, in a manner that will not contribute to the taking of any endangered or threatened species or to the destruction of critical habitat.

22. ENVIRONMENTAL MONITORING

22.1. Landfill Gas Management

The subsurface migration of landfill gas will be monitored as outlined in the Landfill Gas Management Plan (LGMP) included in Attachment 14 of the SDP. A record of the

SITE OPERATING PLAN
CITY OF ALICE MUNICIPAL SOLID WASTE LANDFILL
Permit No. MSW 262-C

installation of each gas monitoring or control facility will be maintained in the SOR and submitted to the TCEQ. All landfill gas monitoring results will be maintained in the SOR, and all monitoring results documenting excessive concentrations of methane will be forwarded to the TCEQ. The City will obtain written authorization from the TCEQ prior to making any changes to the landfill gas management system.

22.2. Groundwater Monitoring

Groundwater in the vicinity of the landfill will be monitored as outlined in the Groundwater Sampling and Analysis Plan (GWSAP) included as Attachment 11 of the SDP. A record of the location, installation, and development procedures for any additional groundwater monitoring wells will be maintained in the SOR and submitted to the TCEQ. All landfill groundwater monitoring results will be maintained in the SOR and forwarded to the TCEQ in accordance with the GWSAP and TCEQ approved procedures. The City will obtain written authorization from the TCEQ prior to making any changes to the groundwater monitoring system or procedures.

23. OIL, GAS AND WATER WELLS

There is one abandoned natural gas well located within the footprint of the Phase I area, as discussed in the SDP. This well was capped and plugged in 1989 and the plugging records were submitted to the applicable regulatory agencies. There is also an existing, on-site water well located along the Resaca De Enmedio in the western portion of the site, as shown on the Area Land Use Map, included with Part I of the application. As indicated in the SDP, even though this well is not located within the proposed landfill footprint, it is to be plugged prior to beginning operations in Section F.

Immediate written notification will be provided to the TCEQ upon the discovery of an abandoned water, oil, natural gas, or any other type of well on-site. A written certification that the well has been capped, plugged, and closed in accordance with TCEQ or Railroad Commission of Texas rules will be provided to the TCEQ within thirty (30) days of the discovery.

24. COMPACTION

Waste shall be placed only in areas which have been properly lined, prepared, and accepted by the TCEQ, as outlined in the SLQCP. The incoming waste shall be shaped and placed in approximately ten foot (10') levels and compacted. Care will be taken during placement and compaction of the waste to avoid damage to the landfill lining and leachate collection system. At the end of the day, all levels will be properly covered. The soil shall be graded to facilitate runoff from the working face for collection in a bermed working face area as described in the

SITE OPERATING PLAN
CITY OF ALICE MUNICIPAL SOLID WASTE LANDFILL
Permit No. MSW 262-C

Leachate and Contaminated Water Management Plan (LCWMP) in Attachment 15 of the SDP. The bermed area may be enlarged or sectioned to enhance the handling of contaminated rainwater as needed.

When a portion of the landfill is completed to approximately three and one-half (3½) feet below the final fill elevations, waste disposal in that area will end. Final fill elevations are described in Attachment 2 (Typical Fill Cross Sections) and Attachment 12 (Landfill Closure Plan) of the SDP. The final cover system for the completed section will be installed in accordance with the Soils and Liner Quality Control Plan (SLQCP) in Attachment 10 of the SDP. A cover application log will be maintained in the SOR by the Landfill Superintendent or a designated alternate detailing when, where, and how daily, intermediate, or final cover was applied. A log form is provided in Appendix C.

25. LANDFILL COVER

25.1. Daily Cover Options

One of the following daily cover options will be used at the landfill. Manufacturer's information and application procedures will be provided to the TCEQ for review prior to the use of one of the alternative daily cover options. New daily or alternative daily cover technologies will only be utilized in accordance with TCEQ regulations, and specifically 30 TAC §330.165(d).

25.1.1. Standard Daily Cover

The standard daily cover material shall be soil excavated from the site. The six-inch (6") daily cover will consist of well-compacted earthen material not previously mixed with garbage, rubbish or other solid waste, and will be compacted sufficiently to minimize rutting and erosion and to prevent windblown waste, fire, odors, scavenging, or insect and rodent problems. A stockpile of soil to be used as daily cover will be maintained near the active face. The stockpile will be placed to avoid interference with site drainage.

25.1.2. Alternative Daily Cover Options

The following alternative daily cover materials may be used. Alternative daily cover technologies will only be utilized in accordance with TCEQ regulations, and specifically 30 TAC §330.165(d). These technologies may only be utilized for a period of twenty four (24) hours, after which either additional waste or daily cover will be applied.

SITE OPERATING PLAN
CITY OF ALICE MUNICIPAL SOLID WASTE LANDFILL
Permit No. MSW 262-C

25.1.2.1. Liquid Clay Daily Cover

A spray-on liquid clay product may be used as a daily cover material to control dust, erosion, odor, disease vectors, and windblown debris. Upon application, the liquid clay creates a blanket crust. The clay product is nontoxic and biodegradable. Since the required cover thickness for the liquid clay daily cover is less than six (6) inches, use of this product will conserve landfill space and prolong the potential landfill life.

25.1.2.2. Foam or Other Spray-on Daily Cover

Foam can be used as an alternative daily cover material to control vectors and odors, and to prevent the start or spread of fires. Foam and most of the other spray-on products compress almost completely upon placement of the next layer of solid waste, so the use of these products will conserve landfill space and prolong the potential landfill life.

25.1.2.3. Fabric Daily Cover

A variety of fabric daily covers are available for use as alternatives to a soil daily cover. Use of a fabric daily cover will save landfill volume and prolong the life of the landfill. The City has been utilizing fabric tarps for daily cover since approximately 1996. Details on the use of these tarps has been included in the SOR and historical regulatory files of the TCEQ.

25.2. Intermediate Cover

Disposal areas that have received waste but will be inactive for at least one hundred eighty (180) days will be provided with an intermediate cover. The intermediate cover will include at least six (6) inches of suitable earthen material that is capable of sustaining native plant growth for a total of at least twelve (12) inches of soil cover. The intermediate cover consist of earthen material not previously mixed with garbage, rubbish, or other solid waste, and will be graded to prevent water ponding. Intermediate cover must be seeded or sodded following its application in order to control erosion. Inspection and repair procedures for intermediate cover are presented below.

25.3. Final Cover

Final cover will be installed in accordance with the Site Closure Plan, included in Attachment 12 of the SDP, and in accordance with the rules of the TCEQ.

SITE OPERATING PLAN
CITY OF ALICE MUNICIPAL SOLID WASTE LANDFILL
Permit No. MSW 262-C

25.4. Erosion of Cover

Areas of the landfill which have received either interim or final cover will be inspected annually. As presented in 30 TAC 330.165(g), the TCEQ has determined that erosion exceeding four (4) inches in depth is sufficient to jeopardize either final or intermediate cover. Erosion of final or intermediate cover exceeding this standard will be repaired within five days of detection by restoring the cover material, grading, compacting, and seeding unless the TCEQ approves otherwise, based on the extent of the damage requiring more time to repair or the repairs are delayed because of weather conditions. The periodic inspections and restorations are required during the entire operational life and for the post-closure maintenance period. These inspections should be documented in the Cover Application/Inspection Records, described below and shall note the date of detection and date of repair, along with any deviations from the schedule presented above.

25.5. Cover Application/Inspection Records

A cover application/inspection record or log will be maintained on site to be readily available for inspection by TCEQ representatives and authorized agents or employees of local governments having jurisdiction. This record will specify the date cover (no exposed waste) was accomplished, how it was accomplished, and the last area covered. This applies to daily, intermediate, and alternate daily cover. For final cover, this record will specify the area covered, the date cover was applied, and the thickness applied that date. Each entry will be certified by the signature of the on-site supervisor that the work was accomplished as stated in the record. This cover application/inspection record shall also be used to record the inspections required by Section 25.4, above.

26. PONDED WATER

The ponding of water over waste on a landfill, regardless of its origin, will be prevented. The Landfill Superintendent or his designated alternate shall inspect the landfill areas within two (2) days following a rainfall event at the landfill. Pondered water that occurs in the active portion of a landfill or on a closed landfill will be eliminated and the area in which the ponding occurred will be filled in and regraded within seven (7) days of the occurrence. All water coming into contact with waste or contaminated soils will be treated as contaminated water and managed as outlined in the LCWP, in Attachment 15 of the SDP. Contaminated water is not to be discharged from the facility without specific written authorization from the TCEQ.

27. DISPOSAL OF SPECIAL WASTES

If the City of Alice chooses, the following special wastes may be accepted at the landfill. Transporters and generators of any special wastes accepted by the landfill must provide

SITE OPERATING PLAN
CITY OF ALICE MUNICIPAL SOLID WASTE LANDFILL
Permit No. MSW 262-C

documentation concerning transporter permits or registrations, generator registrations, and an estimate of the anticipated quantity, rate, and frequency of disposal of each special waste. Procedures for disposal at the landfill of the special wastes are provided below.

27.1.1. Dead Animals

If dead animals are accepted by the landfill, they will be covered by three (3) feet of other solid waste or by at least two (2) feet of soil immediately upon receipt. Carcasses and body parts of animals designated as special waste from health care related facilities must be treated by chemical disinfection, incineration, steam sterilization, or thermal inactivation prior to disposal and immediate covering as described in this section.

27.1.2. Non-Regulated Asbestos-Containing Material (Non-RACM)

If non-regulated asbestos-containing waste is accepted at the landfill, it will be placed on the active working face for disposal with other municipal solid waste. No material containing non-regulated asbestos-containing material will be placed on any surface or roadway subject to vehicular traffic. Disposal of regulated asbestos-containing material (RACM) at the landfill is prohibited without prior written approval from TCEQ.

27.1.3. Industrial Solid Waste

At the City's option, Class I industrial (non-hazardous) solid waste may be accepted at the landfill if prior authorization is obtained from the TCEQ. Class II and Class III industrial solid wastes can be disposed at the landfill with routine municipal solid waste. Industrial solid wastes are designated by the TCEQ as Class I due to toxicity, corrosiveness, flammability, or reactivity that can endanger human health or the environment when the wastes are improperly managed. Characteristics of Class I Industrial Solid Waste are outlined in 30 TAC §335. Class III industrial wastes are inert and essentially insoluble materials such as rock, brick, glass, dirt, and certain types of plastic or rubber that are not readily decomposable. Class II industrial solid wastes are industrial solid wastes that do not fall under the definitions of either Class I or Class III.

27.1.4. Sludges and Liquids

Sludges, grease trap waste, grit trap waste, or liquid wastes from municipal sources can be accepted at the landfill only if the material has been processed to allow the material to pass the Paint Filter Liquids Test (EPA Method 9095). Documentation certifying that the waste contains no free liquids must be provided by the transporter at the gate prior to entrance into the landfill. The City of Alice may choose to establish a liquid waste

SITE OPERATING PLAN
CITY OF ALICE MUNICIPAL SOLID WASTE LANDFILL
Permit No. MSW 262-C

stabilization processing operation in the future, but will provide the necessary data and obtain the required authorizations from the TCEQ prior to the start of the operation.

28. SUPPORT OPERATIONS

28.1. New Landfill Units

Planning and construction of new landfill sections must begin before the area is needed for waste disposal. Adequate time will be allowed to obtain a contract for the work, complete the construction, thoroughly inspect the work, and obtain all necessary approvals. Placement of waste will not commence in a newly constructed landfill cell prior to approval of the appropriate evaluation reports as outlined in the facility's Soils and Liner Quality Control Plan (SLQCP) included in Attachment 10 of the SDP.

28.2. Dust Control

An all-weather road will be provided from the entrance on County Road 118 to the truck scale. All internal landfill roads will also be caliche all-weather roads. A city-owned water truck may be used to minimize dust as necessary. Also, the City Public Works Department can provide a street sweeper for dust and litter control.

28.3. Wet Weather Operations

During rainy weather, necessary equipment will be used to scrape excess mud off the access roads as necessary. Disposal operations will continue at the currently active disposal area during inclement weather. Traffic will remain on the all-weather roads. Tracking of mud onto public roadways will be minimized. Access roads will be repaired as needed to minimize depressions, ruts, and potholes. In addition, ponded water in the active portion of the landfill or on closed portions of the landfill will be removed as quickly as possible, and the ponding area will be filled and regraded within seven (7) days of the occurrence.

As outlined in the Site Development Plan, the western facility entrance crosses the Resaca de Enmedio floodplain. Once the facility entrance is moved from the east side to the west side, the entrance will be inundated by storm flows with a frequency of longer than two (2) years. The design of the entrance road is detailed in Attachment 6. Data from Attachment 6 indicates that the roadway will be overtopped for a period of nine (9) hours, with the period of inundation beginning approximately twelve (12) hours into a 100 year storm event. During times when there is greater than six (6) inches of water going over the west facility entrance, it will be considered impassible. Gates will be installed which will be closed and locked to prevent access during the time the entrance road is inundated. A staff gage will

SITE OPERATING PLAN
CITY OF ALICE MUNICIPAL SOLID WASTE LANDFILL
Permit No. MSW 262-C

also be installed on top of the crossing to allow facility personnel to determine when to close the entrance.

During the time the entrance is closed, disposal operations must be suspended. As outlined in the drainage calculations in Attachment 6, there will be several hours warning before the entrance is inundated. During this time, the City will obtain dumpsters and roll-off containers to place at the western site entrance. These containers can be used for temporary storage of the solid waste until the entrance road becomes passable. The landfill personnel will then move the waste into the landfill, and place it in accordance with the standard wet weather operating procedures.

28.4. Erosion Control

Erosion of final and intermediate cover shall be repaired promptly. Inspections and repairs will be continued during the active and post-closure periods.

28.5. Treatment and Disposal of Leachate

Leachate collected in the Leachate Storage Area may be recirculated in the waste disposal area or disposed of at an authorized facility, as outlined in the Leachate and Contaminated Water Management Plan (LCWMP) included in Attachment 15 of the SDP. If a landfill gas collection system is installed, the landfill gas condensate may be collected, stored, and recirculated or disposed of with the leachate.

28.6. Control of Contaminated Water

Water coming in contact with landfill leachate, solid waste, or the working face will be handled as first degree contaminated water as outlined in the Leachate and Contaminated Water Management Plan (LCWMP) in Attachment 15 of the SDP. Runoff on areas of the landfill which have not received final cover will be handled as second degree contaminated water as outlined in the LCWMP.

28.7. Waste Processing Activities

The landfill may choose to establish the following waste processing activities on-site.

28.7.1. Brush and Yard Waste Composting

If the landfill chooses to initiate a brush and yard waste composting operation, the City of Alice will submit a Composting Plan to TCEQ for approval.

SITE OPERATING PLAN
CITY OF ALICE MUNICIPAL SOLID WASTE LANDFILL
Permit No. MSW 262-C

28.7.2. Liquid Waste Stabilization

If the landfill chooses to initiate a bulk liquid stabilization operation, the City of Alice will provide the required submittals and obtain authorization from the TCEQ. This operation would be intended for the stabilization of municipal water and wastewater treatment sludges, and grease and grit trap wastes.

28.7.3. Other Applicable Regulations

The facility will be operated in accordance with all other applicable state, federal and local regulations.

28.8. Traffic Control

Strict speed control will be imposed on vehicles within the site and signs will inform drivers of traffic flow patterns. Landfill related traffic shall not be allowed to stand or park outside the permitted area.

28.9. Collection and Transport Vehicles

Only those persons operating vehicles that comply with the following requirements will be authorized to dispose of waste at the facility:

- All vehicles and equipment used for the collection and transportation of waste will be operated, and maintained to prevent loss of waste material and to limit health and safety hazards to landfill personnel and the public.
- Collection vehicles and equipment will be maintained in a sanitary condition to preclude odors and fly breeding.
- Collection vehicles not equipped with an enclosed transport body will use other devices such as nets or tarpaulins to preclude accidental spillage.

Landfill personnel will keep vigilant watch for compliance with operating requirements. Signs with directional arrows and/or portable traffic barricades will help to restrict traffic to designated disposal locations. Signs will be placed along the access route to the current disposal area. In addition, rules for waste disposal and prohibited waste will be prominently displayed on signs at the site entrance.

29. SAFETY RULES

Site safety rules will be strictly followed.

SITE OPERATING PLAN
CITY OF ALICE MUNICIPAL SOLID WASTE LANDFILL
Permit No. MSW 262-C

29.1. Equipment Operation

Personnel will be instructed to report any unsafe equipment and to operate only equipment for which they have been trained.

29.2. Personal Safety Equipment

Personnel screening incoming waste loads or otherwise coming into contact with any waste will wear appropriate personal protective equipment.

29.3. Landfill Gas Safety

Landfill gas may contain up to fifty-five percent (55%) by volume of methane. Methane may explode when present in concentrations between five percent (5%) and fifteen percent (15%) by volume in air. No smoking will be allowed in the vicinity of boreholes, excavations, gas monitoring probes, landfill gas vents, or enclosed spaces on the landfill. Landfill gas with methane concentrations greater than five percent (5%) by volume in air in monitoring points, probes, subsurface soils or other matrices at the facility constitute and exceedance of TCEQ regulatory standards and the facility's Landfill Gas Management Plan (LGMP).

29.4. Other Safety Rules

- No firearms allowed on-site.

30. REVISIONS TO SITE DEVELOPMENT PLAN

The approved SDP, including all attachments, becomes an operational requirement for the City of Alice Municipal Solid Waste Landfill. Any significant deviation from the SDP may not be initiated without prior approval of the TCEQ.

If at any time during the life of the site, the landfill operator becomes aware of any condition in the approved SDP which necessitates a change to accommodate new technology or improved methods or which makes it impractical to keep the site in compliance, the landfill operator shall submit a revised SDP to the TCEQ. Such proposed changes to the approved SDP do not require a permit amendment but must be approved by the TCEQ prior to implementation.

In the event that a necessary deviation is the result of unforeseen circumstances and there is insufficient time to prepare and submit a revised plan, the landfill operator shall immediately contact the TCEQ by telephone or telegram and obtain interim authorization. The interim authorization shall be in writing and shall not exceed thirty (30) days, during which time the revised plan shall be prepared and submitted to the TCEQ.

SITE OPERATING PLAN
CITY OF ALICE MUNICIPAL SOLID WASTE LANDFILL
Permit No. MSW 262-C

All drawings or other sheets prepared for revisions to a SDP or other previously approved documents shall be submitted in triplicate and shall be signed and sealed by the registered professional engineer responsible for their preparation. Bound plans or reports shall be signed and sealed by the engineer.

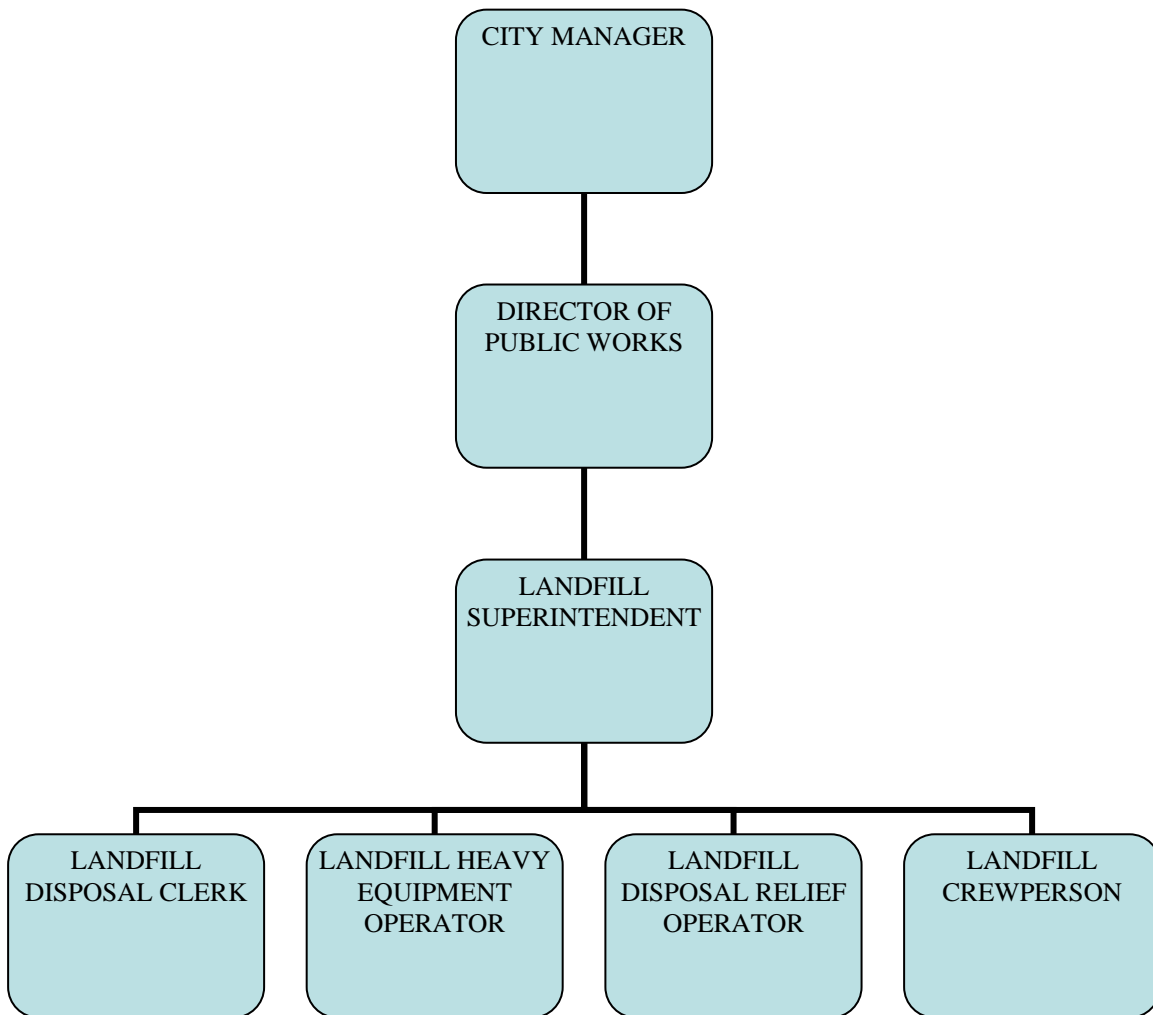
31. REFERENCES

1. "Caterpillar Performance Handbook", Edition 15, Caterpillar Tractor Co., Peoria, Illinois, October 1984.
2. "Geotechnical Study - City of Alice Sanitary Landfill Extension - Permit Application No. 262-B", Southwestern Laboratories, Inc., Geotechnical Engineering Division, San Antonio, Texas, May 1991.
3. "Regional Solid Waste Management Plan", Coastal Bend Council of Governments, Corpus Christi, Texas, April 1994.

SITE OPERATING PLAN
CITY OF ALICE MUNICIPAL SOLID WASTE LANDFILL
Permit No. MSW 262-C

APPENDIX A
ORGANIZATIONAL CHART

ORGANIZATIONAL CHART
CITY OF ALICE MUNICIPAL SOLID WASTE LANDFILL



SITE OPERATING PLAN
CITY OF ALICE MUNICIPAL SOLID WASTE LANDFILL
Permit No. MSW 262-C

APPENDIX B
PROCEDURES TO PREVENT DISPOSAL OF PROHIBITED WASTES

SITE OPERATING PLAN

CITY OF ALICE MUNICIPAL SOLID WASTE LANDFILL

Permit No. MSW 262-C

CITY OF ALICE MUNICIPAL SOLID WASTE LANDFILL PROCEDURES TO PREVENT DISPOSAL OF PROHIBITED WASTES PROHIBITED WASTES

The landfill is only authorized to receive municipal solid waste, including household and commercial waste, brush, construction and demolition waste, and certain special wastes identified below. Disposal of the following wastes is specifically prohibited at the landfill:

- Hazardous waste as defined in Title 40 of the Code of Federal Regulations, Part 261 (40 CFR §261);
- Polychlorinated biphenyl (PCB) wastes as defined in 40 CFR §761; includes containers, equipment, and articles that contain PCBs in concentrations greater than fifty (50) parts per million (ppm);
- Lead acid storage batteries;
- Used oil filters from internal combustion engines;
- Do-it-yourself used motor vehicle oil;
- Whole used or scrap tires;
- Appliances containing chlorinated fluorocarbons (CFC);
- Bulk or noncontainerized liquid waste other than household waste;
- Septic waste;
- Containers of liquid waste except household waste or containers similar in size to those found in household waste; and,
- Medical waste consisting of recognizable human body parts, tissues, fetuses, organs, or the products of human abortions.

SPECIAL WASTES

Special waste is defined as any solid waste or combination of solid wastes that because of its quantity, concentration, physical or chemical characteristics, or biological properties, requires special handling and disposal to protect the human health or the environment. Most of the special wastes listed below are prohibited unless prior written approval is obtained from the TCEQ. Some special wastes may be accepted at the landfill if the City of Alice chooses to do so. Any special wastes that the City of Alice chooses to accept will be properly handled and disposed as required by TCEQ regulations.

According to TCEQ regulations, the following special wastes may be accepted at the City of Alice Municipal Solid Waste Landfill if the City of Alice chooses. However, the City of Alice chooses not to accept these types of waste at this time.

- Hazardous waste from conditionally exempt small-quantity (generators that may be exempt from full controls under 30 TAC §335.401-335.412 (related to Household

SITE OPERATING PLAN

CITY OF ALICE MUNICIPAL SOLID WASTE LANDFILL

Permit No. MSW 262-C

Materials Which Could Be Classified As Hazardous Waste) in quantities less than 220 lb/month per generator;

- Special waste from health care related facilities, such as animal waste, bulk human blood and blood products, microbiological waste, pathological waste, and sharps;
- Pesticide (insecticide, herbicide, fungicide, or rodenticide) containers; and,

According to TCEQ regulations, the following special wastes may be accepted at the City of Alice Municipal Solid Waste Landfill if the City of Alice chooses. At this time, the City chooses to accept these wastes, but reserves the right to restrict or terminate the acceptance of these wastes at any time. These wastes will be disposed as outlined in Section 6.9 of the SOP.

- Dead animals (from the City Humane Department only);
- Non-regulated asbestos-containing material.

The following special wastes may be accepted at the City of Alice Municipal Solid Waste Landfill if the City of Alice chooses, but only if the wastes have been treated to pass the Paint Filter Liquids Test (EPA Method 9095):

- Municipal wastewater treatment plant sludges, other types of domestic sewage treatment plant sludges, and water-supply treatment plant sludges; and,
- Grease and grit trap wastes.

The following special wastes will not be accepted at the City of Alice Municipal Solid Waste Landfill without the prior written approval of the TCEQ:

- Hazardous waste from conditionally exempt small-quantity generators that may be exempt from full controls under 30 TAC §335.401-335.412 in quantities greater than 220 lb/month per generator;
- Class I industrial nonhazardous waste not routinely collected with municipal solid waste;
- Municipal wastewater treatment plant sludges, other types of domestic sewage treatment plant sludges, and water-supply treatment plant sludges that do not pass the Paint Filter Liquids Test;
- Grease and grit trap wastes that do not pass the Paint Filter Liquids Test;
- Wastes from commercial or industrial wastewater treatment plants; air pollution control facilities; and tanks, drums, or containers used for shipping or storing any material that has been listed as a hazardous constituent in 40 CFR, Part 261, Appendix VIII, but has not been listed as a commercial chemical product in 40 CFR, §261.33(e) or (f);
- Drugs, contaminated foods, or contaminated beverages, other than those contained in normal household waste;
- Regulated asbestos-containing material;
- Incinerator ash;
- Soil contaminated by petroleum products, crude oils, or chemicals;

SITE OPERATING PLAN

CITY OF ALICE MUNICIPAL SOLID WASTE LANDFILL

Permit No. MSW 262-C

- Used oil;
- Light ballasts and/or small capacitors containing Polychlorinated biphenyl (PCB) compounds;
- Waste from oil, gas, and geothermal activities subject to regulation by the Railroad Commission of Texas; and,
- Waste generated outside the boundaries of Texas that contains:
 - Any industrial waste;
 - Any waste associated with oil, gas, and geothermal exploration, production, or development activities; or
 - Any item listed as a special waste in this list; any waste stream other than household or commercial garbage, refuse, or rubbish.

SITE ENTRANCE PROCEDURES

The following procedures are followed at the site entrance to prevent the disposal of prohibited wastes.

Entrance Inspections

The Landfill Disposal Clerk or an authorized alternate will visually inspect each incoming waste load for prohibited wastes. All transporters of incoming waste will be questioned concerning the nature and source of the waste. If any prohibited waste is identified in an incoming waste load, the City may use one (1) of two (2) procedures. The first procedure shall include the following steps:

- Remove the prohibited items from the load, and place them in the temporary storage area;
- Properly dispose of the remaining allowable wastes; and
- Pick up the previously removed prohibited items prior to leaving the site, and place on transport vehicle.

If the prohibited items cannot safely be removed from the load, or if all or a portion of the load has been contaminated by the prohibited items, the entire load will be rejected.

Documentation From Waste Transporters

Transporters will be required to provide documentation identifying the origin, characteristics, and quantity of all wastes. Transporters may be required to submit laboratory analysis for special wastes. Transporters unable to provide the required documentation will be refused entry to the landfill.

DETECTION OF PROHIBITED WASTES DURING OR AFTER PLACEMENT

The following procedures will be followed if prohibited wastes are detected during or after placement in the active disposal area.

SITE OPERATING PLAN

CITY OF ALICE MUNICIPAL SOLID WASTE LANDFILL

Permit No. MSW 262-C

Identification of the Waste

If the Landfill Heavy Equipment Operator or other landfill personnel identify the presence of prohibited wastes during or after placement of the waste in the landfill, the landfilling operation will immediately be stopped. The nature and source of the waste will be identified and recorded. The waste transporter will be questioned for additional information if still present.

Removal of the Waste

If the waste is confirmed to be a prohibited type of waste, it must be removed from the landfill and properly disposed of at an authorized facility. If the prohibited waste contains hazardous liquids or PCBs that have spilled onto the landfill working face or the surrounding area, the spill area may require remediation. No further disposal of authorized waste will take place in the affected area until any necessary remediation has been completed. If the requirement for removal of the waste or remediation is not clear, the City of Alice will contact the TCEQ for a determination. Typical required remediation consists of removal and disposal of contaminated soil and solid waste at an authorized facility. In addition, if the presence of the prohibited waste results in an emergency situation, the local Fire Department and the TCEQ Emergency Response Unit will be contacted.

The following guidelines for prohibited waste disposal and remediation responsibilities apply:

- If the transporter of the prohibited waste is still present, the waste will be reloaded onto the vehicle that transported it to the landfill. The waste transporter will be billed for any necessary remediation.
- If the responsible waste transporter has been identified but is no longer on the site, the City of Alice will remove the waste from the working face of the landfill. If the prohibited waste can be safely stored on-site, the responsible waste hauler will be notified to return to the landfill to remove and properly dispose of the waste. If the waste cannot be safely stored at the landfill, the City of Alice will properly dispose of the waste. The responsible transporter will be billed for the waste disposal and any necessary remediation.

UNLOADING OF WASTE

Waste will be unloaded only at properly designated locations such as the working face, any waste recycling and processing areas, any special waste processing areas, or the designated temporary storage area. No solid waste unloading, storage, disposal, or processing will occur within any easements, the buffer zone, or any right-of-way that crosses the site. Any waste deposited in an unauthorized area will be promptly removed and disposed of properly. If the responsible waste transporter is known, a surcharge will be assessed.

SITE OPERATING PLAN
CITY OF ALICE MUNICIPAL SOLID WASTE LANDFILL
Permit No. MSW 262-C

APPENDIX C
LANDFILL OPERATING FORMS

SITE OPERATING PLAN
CITY OF ALICE MUNICIPAL SOLID WASTE LANDFILL
Permit No. MSW 262-C

APPENDIX D
WASTE ACCEPTANCE RATE DATA

City of Alice Landfill
 Summary of Quarterly Reports to TCEQ

Most Current/Recent Waste Receipts

Report Period	Start Date	End Date	Waste (Tons)			Total
			Comacted	Uncompacted	Diverted	
1st Quarter - FY 2004	9/1/2003	11/30/2003	5,114	9,548	660	15,323
2nd Quarter - FY 2004	12/1/2003	2/29/2004	5,190	7,313	536	13,039
3rd Quarter - FY 2004	3/1/2004	5/31/2004	5,585	8,347	634	14,566
4th Quarter - FY 2004	6/1/2004	8/31/2004	5,443	5,954	949	12,345
1st Quarter - FY 2005	9/1/2004	11/30/2004	5,204	9,854	582	15,639
2nd Quarter - FY 2005	12/1/2004	2/28/2005	5,176	5,970	682	11,828
3rd Quarter - FY 2005	3/1/2005	5/31/2005	5,463	8,078	178	13,719
4th Quarter - FY 2005	6/1/2005	8/31/2005	5,368	9,368	182	14,918
1st Quarter - FY 2006	9/1/2005	11/30/2005	7,907	3,021	985	11,913
2nd Quarter - FY 2006	12/1/2005	2/28/2006	5,114	2,756	154	8,024
3rd Quarter - FY 2006	3/1/2006	5/31/2006	5,458	4,217	228	9,903
4th Quarter - FY 2006	6/1/2006	8/31/2006	5,414	3,610	203	9,228

		66,436	78,037	5,972	150,444
Number of Years	3	22,145	26,012	1,991	50,148
Number of Months	36	1,845	2,168	166	4,179
Number of Calendar Days	1,095	61	71	5	137
Number of Operating Days	905	73	86	7	166

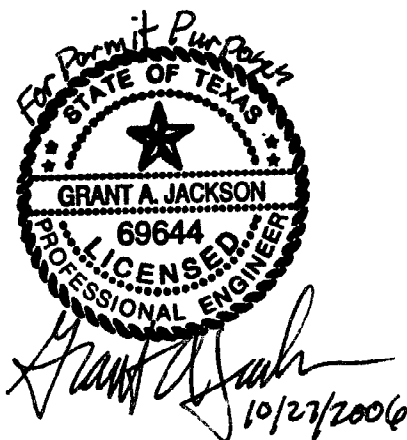
Historical Waste Receipts

1st Quarter - FY 2001	9/1/2000	11/30/2000			8,678
2nd Quarter - FY 2001	12/1/2000	2/28/2001			6,375
3rd Quarter - FY 2001	3/1/2001	5/31/2001			7,983
4th Quarter - FY 2001	6/1/2001	8/31/2001			7,382
Total					30,418
Number of Operating Days	302				101

Esimated Increase, tpd		65
Number of years		6
Average Increase, tpd		11
Average Increase, %		10.8%

Waste Acceptance Rate Projections (tpd)

FY 2007	184.2
FY 2008	204.2
FY 2009	226.2
FY 2010	250.7
FY 2011	277.8
FY 2012	307.8
FY 2013	341.1
FY 2014	378.0
FY 2015	418.8
FY 2020	699.8



SITE OPERATING PLAN
CITY OF ALICE MUNICIPAL SOLID WASTE LANDFILL
Permit No. MSW 262-C

APPENDIX E
CALCULATIONS FOR SOIL AS FIRE SUPPRESSION

